

WESTMINSTER, MARYLAND

AL-5533 (FAA)

23222

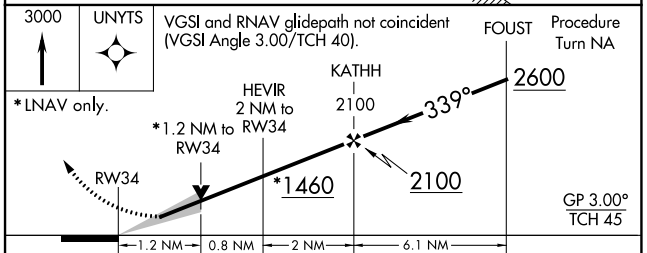
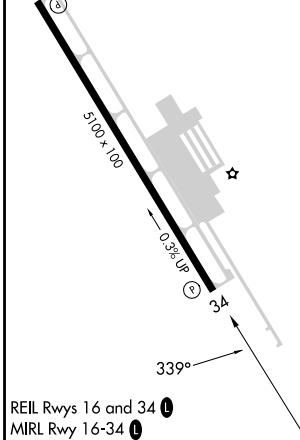
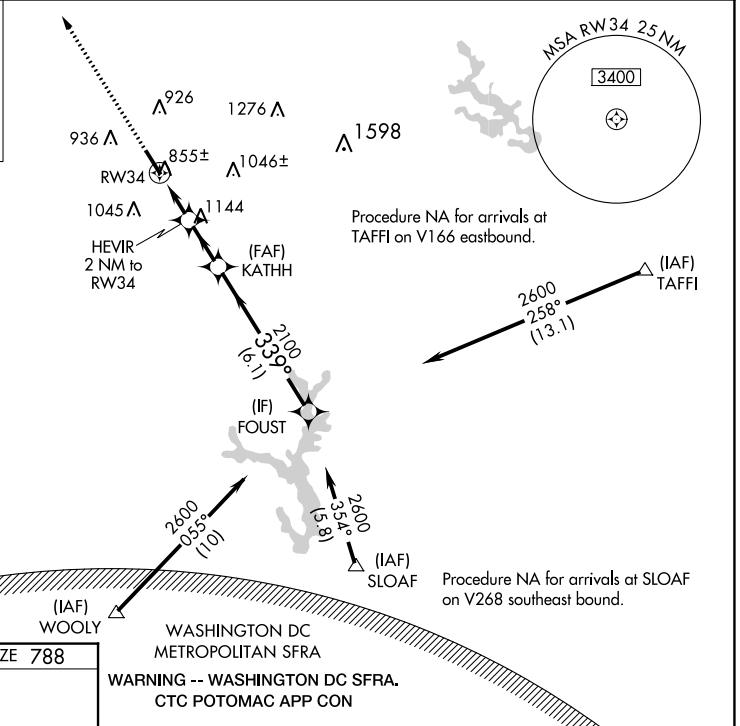
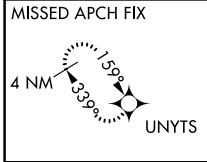
WAAS CH 82117 W34A	APP CRS 339°	Rwy Idg 5100 TDZE 788 Apt Elev 789
--	------------------------	---

RNAV (GPS) RWY 34

CARROLL COUNTY RGNL/JACK B POAGE FLD (DMW)

RNP APCH	For uncompensated Baro-VNAV systems, LNAV/VNAV NA below -16°C (4°F) or above 54°C (130°F).	MISSED APPROACH: Climb to 3000 direct UNYTS and hold
----------	--	--

AWOS-3 121.25	POTOMAC APP CON 125.525 291.625	GCO 121.725	UNICOM 122.7 (CTAF) 0
-------------------------	---	-----------------------	---------------------------------



CATEGORY	A	B	C	D
LPV DA	988-1	200 (200-1)		NA
LNAV/VNAV DA	1105-1½	317 (400-1½)		NA
LNAV MDA	1180-1	392 (400-1)		NA
CIRCLING	1320-1	1400-1	1500-2	NA
	531 (600-1)	611 (700-1)	711 (800-2)	

WESTMINSTER, MARYLAND
Amdt 1C 20MAY21

CARROLL COUNTY RGNL/JACK B POAGE FLD (DMW)
39°36'N-77°00'W

RNAV (GPS) RWY 34

NE-3, 03 OCT 2024 to 31 OCT 2024

NE-3, 03 OCT 2024 to 31 OCT 2024