

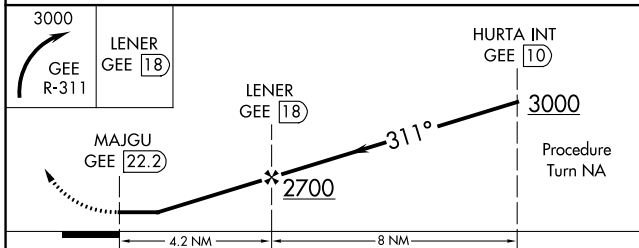
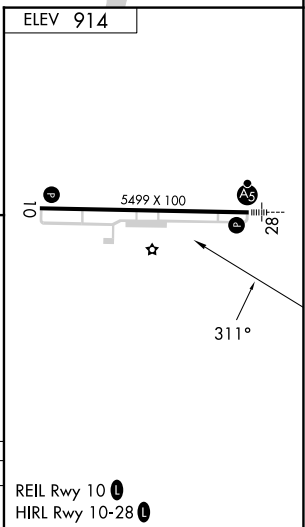
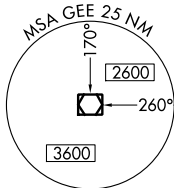
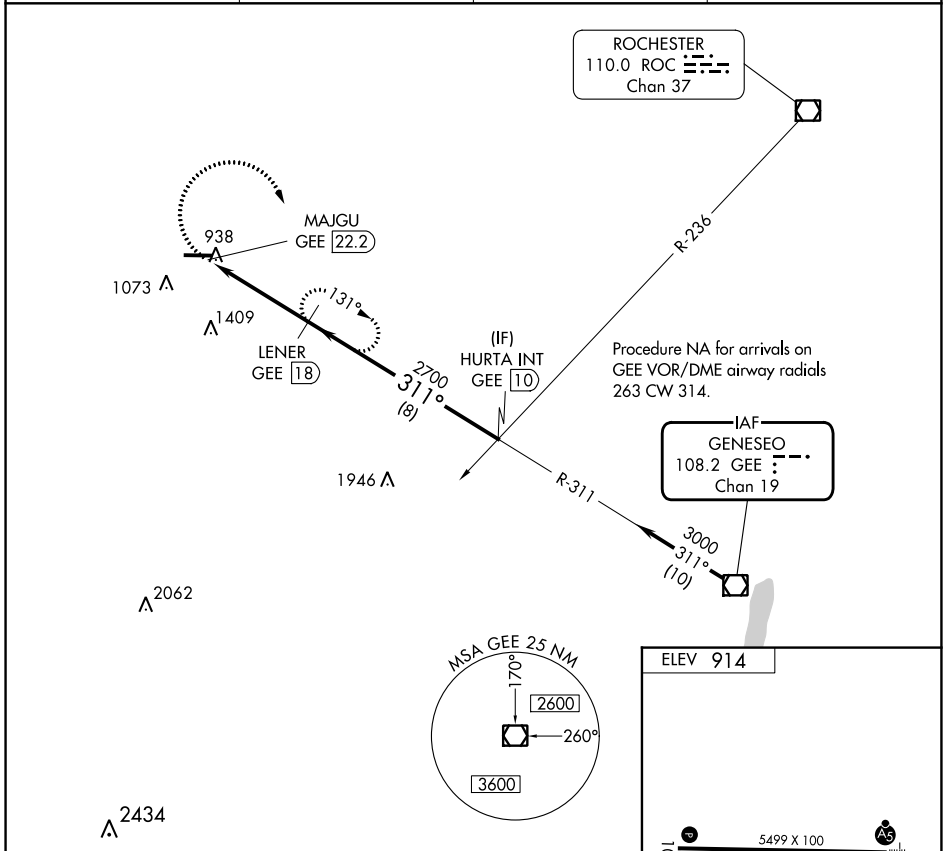
VOR/DME GEE 108.2 Chan 19	APP CRS 311°	Rwy Idg TDZE Apt Elev	N/A N/A 914
---	------------------------	-----------------------------	--

VOR/DME-A
GENESEE COUNTY (GVQ)

⚠ When local altimeter setting not received, use Rochester altimeter setting and increase all MDA 120 feet; increase visibility Cat A ¼ SM and Cat C and D ½ SM.

⚠ MISSED APPROACH: Climbing right turn to 3000 via GEE VOR/DME R-311 to LENER/18 DME and hold, continue to climb-in-hold to 3000.

AWOS-3PT 127.525	ROCHESTER APP CON 123.7 322.3	CLNC DEL 121.8	UNICOM 122.7 (CTAF) 0
----------------------------	---	--------------------------	--



CATEGORY	A	B	C	D
CIRCLING	1620-1 706 (800-1)	1620-1¼ 706 (800-1¼)	1720-2¼ 806 (900-2¼)	1720-2½ 806 (900-2½)

NE-2, 03 OCT 2024 to 31 OCT 2024

NE-2, 03 OCT 2024 to 31 OCT 2024