

LOC/DME I-LUC 109.15 Chan 28(Y)	APP CRS 240°	Rwy Idg TDZE Apt Elev	5500 545 547
---	------------------------	-----------------------------	---

ILS or LOC RWY 24

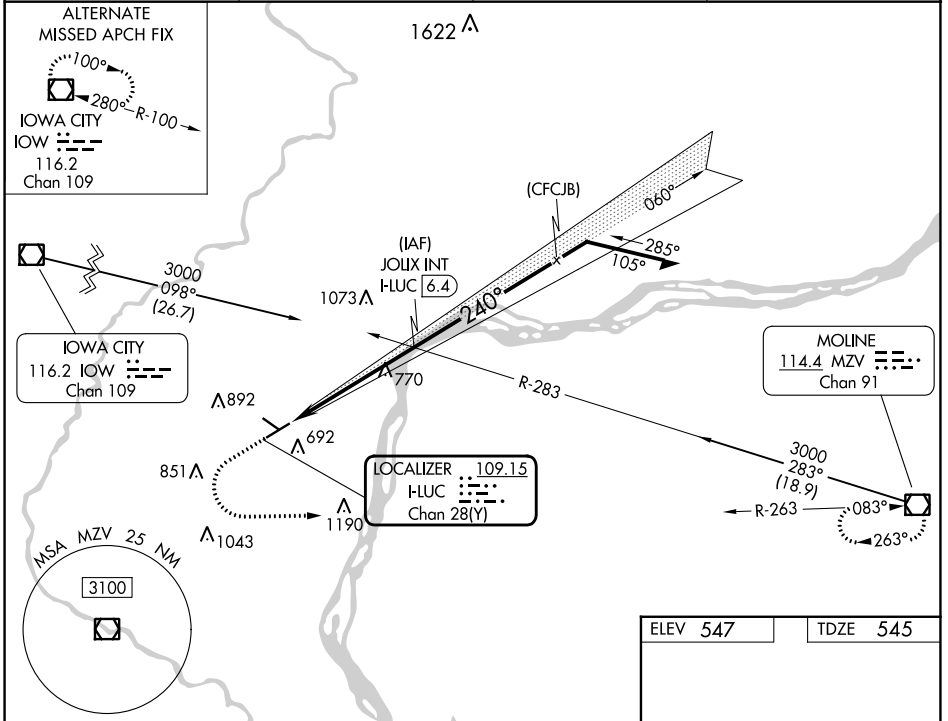
MUSCATINE MUNI (MUT)

V VDP NA with Iowa City altimeter setting. When local altimeter setting not received, use Iowa City altimeter setting; increase DA to 825 feet; increase all MDA 80 feet and S-LOC 24 Cat C/D visibility $\frac{3}{8}$ SM and Circling Cat C visibility $\frac{1}{4}$ SM. For inop ALS when using Iowa City altimeter setting, increase S-ILS 24 visibility to 1 SM all Cats, and S-LOC 24 Cat C/D visibility to $1\frac{1}{4}$ SM.

NA MISSED APPROACH: Climb to 1200 then climbing left turn to 3000 direct MZV VOR/DME and hold.

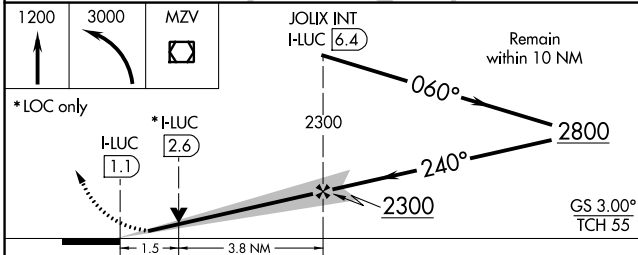


AWOS-3P 120.625	QUAD CITY APP CON * 133.275 257.8	CLNC DEL 119.125	UNICOM 122.7 (CTAF)
---------------------------	---	----------------------------	-------------------------------



NC-3, 03 OCT 2024 to 31 OCT 2024

NC-3, 03 OCT 2024 to 31 OCT 2024



ELEV 547	TDZE 545
REIL Rwy 6, 12, and 30	
MIRL Rwy 6-24 and 12-30	
FAF to MAP 5.3 NM	
Knots	60 90 120 150 180
Min:Sec	5:18 3:32 2:39 2:07 1:46

CATEGORY	A	B	C	D
S-ILS 24	745- $\frac{1}{2}$ 200 (200- $\frac{1}{2}$)			
S-LOC 24	1080- $\frac{1}{2}$ 535 (600- $\frac{1}{2}$)	1080-1 535 (600-1)		
C CIRCLING	1080-1 533 (600-1)	1200-1 653 (700-1)	1200-1 $\frac{3}{4}$ 653 (700-1 $\frac{3}{4}$)	1500-3 953 (1000-3)