

LOC I-PEK 110.3	APP CRS 257°	Rwy ldg 10000 TDZE 27 Apt Elev 30
---------------------------	------------------------	--

ILS Y or LOC Y RWY 26

JACKSONVILLE INTL (JAX)

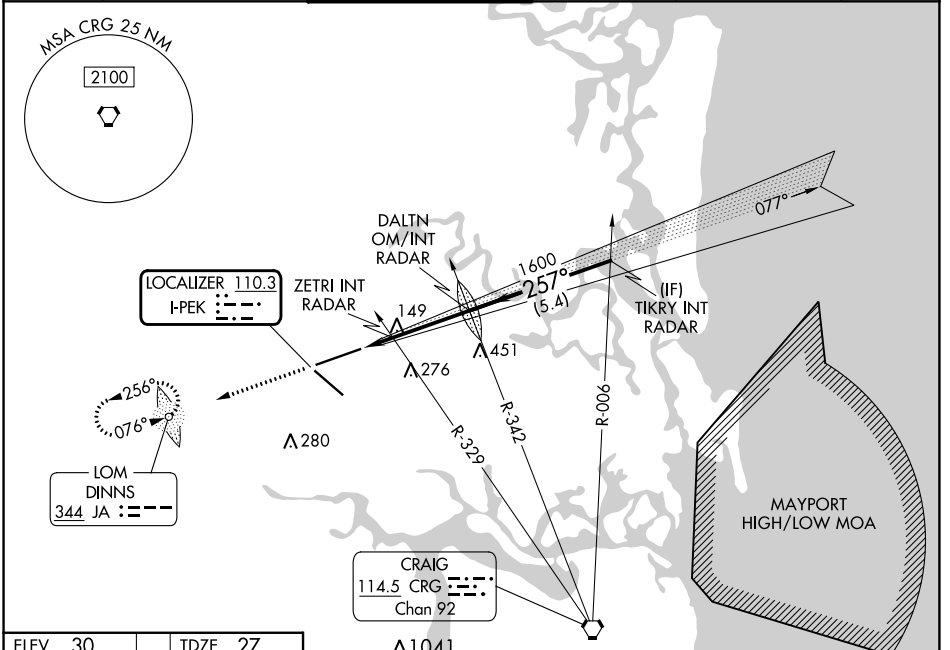
ADF required. RADAR required for procedure entry.

▼ For inop ALS, ZETRI Fix Minimums: increase S-LOC 26 Cats C/D visibility to RVR 5500.

MALSR 

MISSED APPROACH: Climb to 3000 direct DINNS LOM and hold, continue climb-in-hold to 3000.

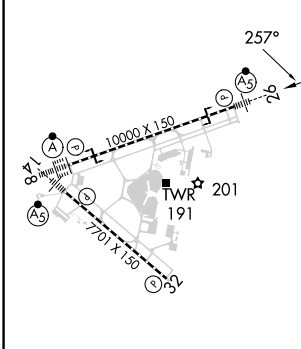
D-ATIS 125.85	JACKSONVILLE APP CON 119.0 269.9	JACKSONVILLE TOWER 118.3 317.7	GND CON 121.9 348.6	CLNC DEL 119.5 290.275	CPDLC
-------------------------	--	--	-------------------------------	----------------------------------	-------



SE-3, 03 OCT 2024 to 31 OCT 2024

SE-3, 03 OCT 2024 to 31 OCT 2024

ELEV 30	TDZE 27
---------	---------



3000	DINNS	VGSI and ILS glidepath not coincident (VGSI Angle 3.00/TCH 70).	TIKRY INT RADAR
2000			
480			
1.2 NM	3 NM	5.4 NM	
GS 3.00°	TCH 55		

REIL Rwy 32
TDZ/CL Rws 8, 14, and 26
HIRL Rws 8-26 and 14-32

FAF to MAP 4.2 NM

Knots	60	90	120	150	180
Min:Sec	4:12	2:48	2:06	1:41	1:24

CATEGORY	A	B	C	D
S-ILS 26	227/18 200 (200-½)			
S-LOC 26	480/24	453 (500-½)	480/45	453 (500-¾)
<input checked="" type="checkbox"/> CIRCLING	520-1	490 (500-1)	580-1½	580-2
ZETRI FIX MINIMUMS (DUAL VOR RECEIVERS REQUIRED)				
S-LOC 26	400/24	373 (400-½)	400/35	373 (400-¾)
<input checked="" type="checkbox"/> CIRCLING	520-1	490 (500-1)	580-1½	580-2
			550 (600-1½)	550 (600-2)