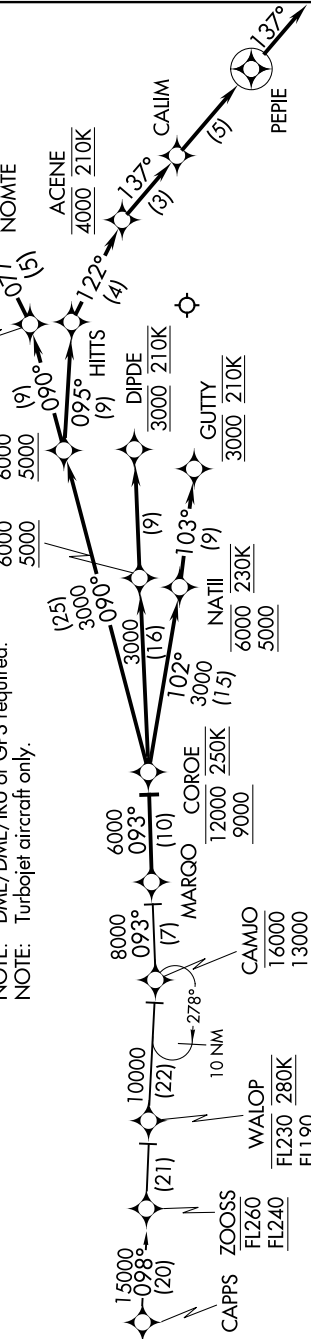


MARQO TWO ARRIVAL (RNAV)

SE-3, 03 OCT 2024 to 31 OCT 2024

JACKSONVILLE APP CON
119.0 127.0 269.9 292.15 (270°-090°)
127.775 377.075 (181°-269°)
124.9 308.4 (091°-180°)
D-ATS 125.85

NOTE: Radar required.
NOTE: RNAV 1.
NOTE: DME/DME/IRU or GPS required.
NOTE: Turbojet aircraft only.



NOTE: Chart not to scale.

ARRIVAL ROUTE DESCRIPTION

CAPPS TRANSITION [CAPPS.MARQO2]:

From MARQO on track 093° to cross COROE between 9000 and 12000 and at 250K.

LANDING RWY 8: From COROE on track 102° to cross NATII between 5000 and 6000 and at 230K, then on track 103° to cross GUTTY at 3000 and at 210K. Expect RNAV (RNP) RWY 8 approach; non-RNP aircraft: expect RADAR vectors to final approach course.

LANDING RWY 14: From COROE on track 093° to cross TASC between 5000 and 6000, then on track 093° to cross DIPDE at 3000 and at 210K. Expect RNAV (RNP) RWY 14 approach; non-RNP aircraft: expect RADAR vectors to final approach course.

LANDING RWY 26: From COROE on track 090° to cross GWIIZ between 5000 and 6000, then on track 090° to cross EGAGE at 4000 and at 210K, then on track 077° to NOMITE, then on track 077° to OLEKE, then on 077° track. Expect RADAR vectors to final approach course.

LANDING RWY 32: From COROE on track 090° to cross GWIIZ between 5000 and 6000, then on track 095° to HITS, then on track 122° to cross ACENE at 4000 and at 210K, then on track 137° to CALIM, then on track 137° to PEPIE, then on 137° track. Expect RADAR vectors to final approach course.

SE-3, 03 OCT 2024 to 31 OCT 2024