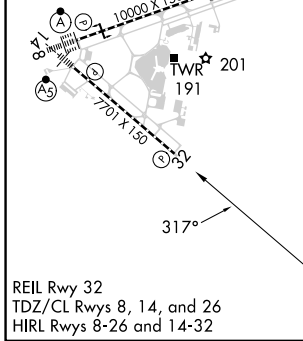
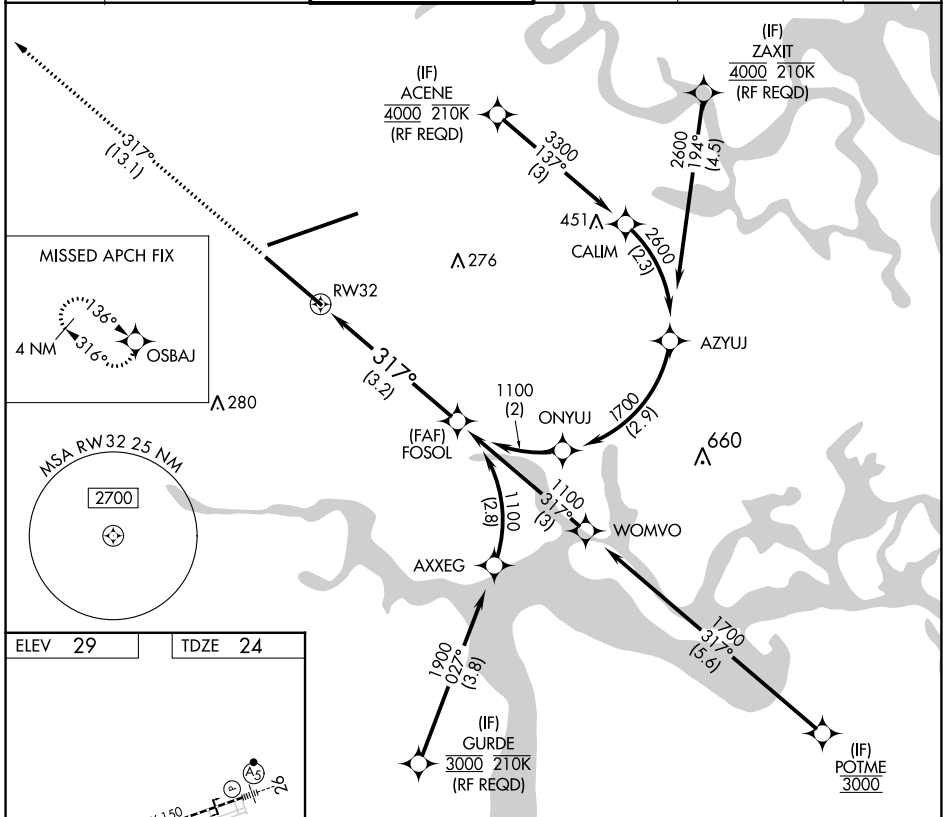


APP CRS	Rwy Idg	<b>7701</b>
<b>317°</b>	TDZE	<b>24</b>
	Apt Elev	<b>29</b>

# RNAV (RNP) Y RWY 32

JACKSONVILLE INTL (JAX)

<p>▼ For uncompensated Baro-VNAV systems, procedure NA below -5°C (23°F) or above 54°C (130°F). GPS required.</p>		<p>MISSED APPROACH: Climb to 2000 on track 317° to OSBAJ and hold.</p>			
D-ATIS	JACKSONVILLE APP CON	JACKSONVILLE TOWER	GND CON	CLNC DEL	CPDLC
<b>125.85</b>	<b>119.0 269.9</b>	<b>118.3 317.7</b>	<b>121.9 348.6</b>	<b>119.5 290.275</b>	



ELEV 29	TDZE 24
2000 OSBAJ	VGSI and RNAV glidepath not coincident (VGSI Angle 3.00/TCH 67).
tr 317°	
RW32	FOSOL 1100
	1100
	GP 3.00° TCH 50
See planview for multiple IF locations.	
3.2 NM	
CATEGORY	A B C D
RNP 0.11 DA	359-1 334 (400-1 1/2)
RNP 0.30 DA	423-1 399 (400-1 1/2)

**AUTHORIZATION REQUIRED**

SE-3, 03 OCT 2024 to 31 OCT 2024

SE-3, 03 OCT 2024 to 31 OCT 2024