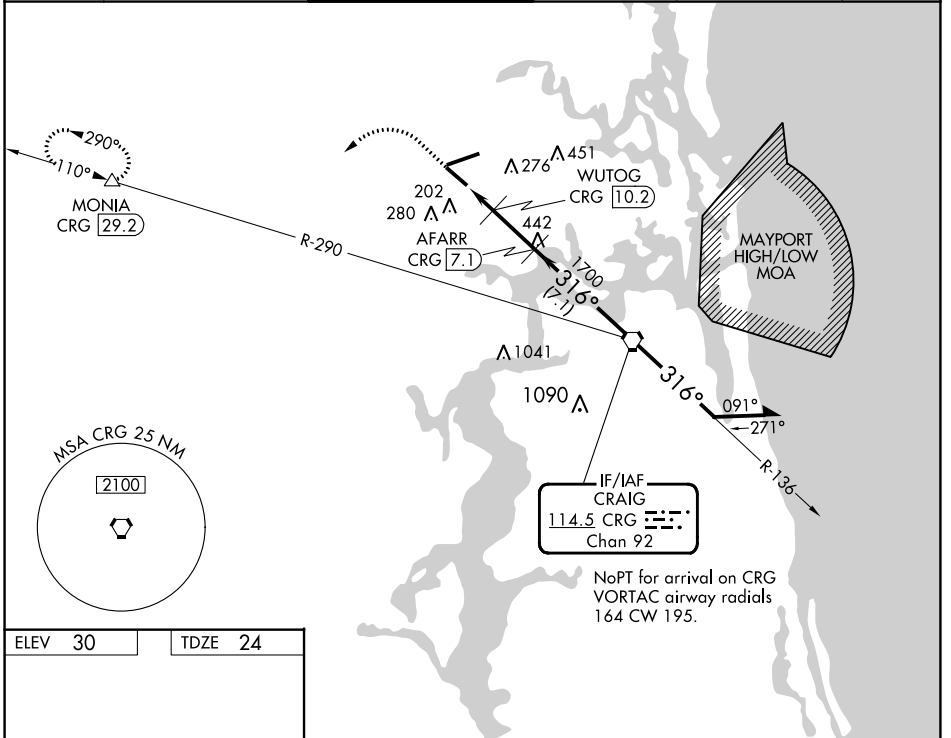


VORTAC CRG 114.5 Chan 92	APP CRS 316°	Rwy Idg TDZE Apt Elev	7701 24 30
--	------------------------	-----------------------------	---------------------------------------

VOR/DME RWY 32

JACKSONVILLE INTL (JAX)

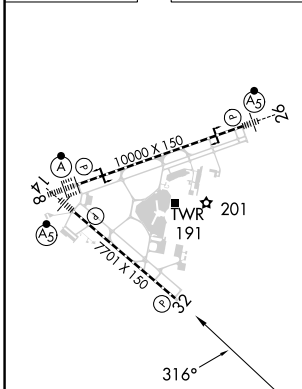
<p>▼ Rwy 32 helicopter visibility reduction by below 3/4 SM NA. ▲ Cat E procedure turn NA.</p>		<p>MISSED APPROACH: Climb to 1000 then climbing left turn to 3000 on heading 250° and on CRG VORTAC R-290 to MONIA/CRG 29.2 DME and hold.</p>			
D-ATIS 125.85	JACKSONVILLE APP CON 119.0 269.9	JACKSONVILLE TOWER 118.3 317.7	GND CON 121.9 348.6	CLNC DEL 119.5 290.275	CPDLC



SE-3, 03 OCT 2024 to 31 OCT 2024

SE-3, 03 OCT 2024 to 31 OCT 2024

ELEV 30	TDZE 24
---------	---------



1000	3000	CRG R-290	MONIA	VGSI and ILS glidepath not coincident (VGSI Angle 3.05/TCH 68).	
↑	hdg 250°		△		
<p>Remain within 10 NM</p>		CRG VORTAC	6000	136°	
<p>316°</p>		2100			
<p>720 1700</p>		AFARR CRG 7.1	WUTOG CRG 10.2	3.00° TCH 50	
<p>1.1 0.9 -3.1 NM -7.1 NM</p>					
CATEGORY	A	B	C	D	E
S-32	460-1	436 (500-1)	460-1 1/4	436 (500-1 1/4)	
CIRCLING	520-1	490 (500-1)	580-1 1/2 550 (600-1 1/2)	580-2 550 (600-2)	760-2 1/2 730 (800-2 1/2)