

(WHAEL.PIEGY1) 22363

AL-5573 (FAA)

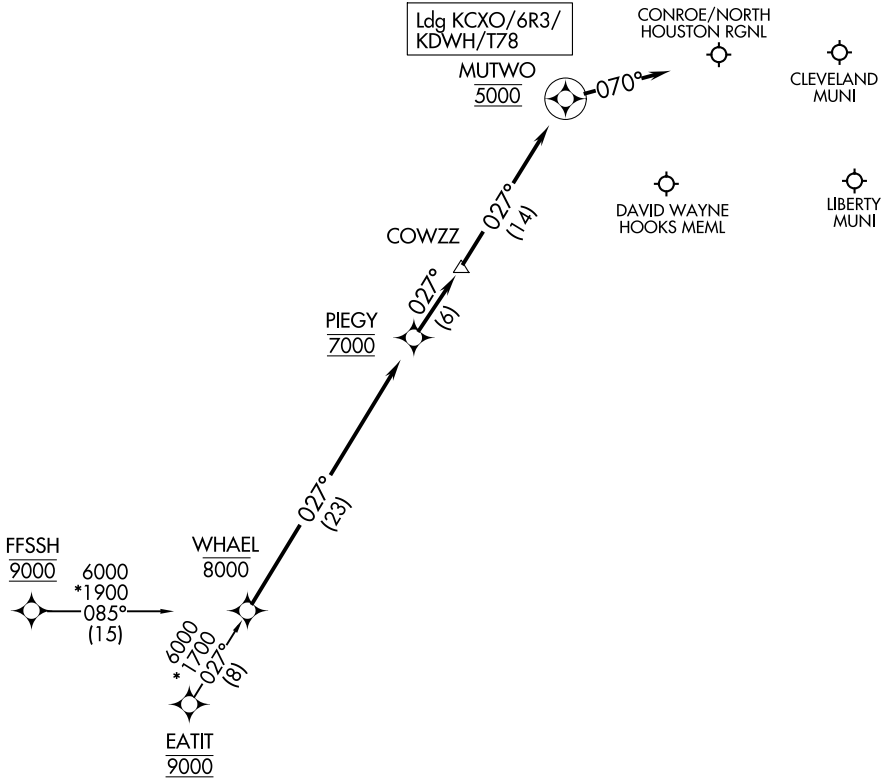
# PIEGY ONE ARRIVAL (RNAV)

HOUSTON, TEXAS

HOUSTON APP CON  
119.7 281.4  
CXO ATIS  
118.325  
DWH ATIS  
128.375

RNAV 1 - DME/DME/IRU or GPS.

RADAR required.



SC-5, 03 OCT 2024 to 31 OCT 2024

SC-5, 03 OCT 2024 to 31 OCT 2024

NOTE: Chart not to scale.

## ARRIVAL ROUTE DESCRIPTION

EATIT TRANSITION (EATIT.PIEGY1)  
FFSSH TRANSITION (FFSSH.PIEGY1)

LANDING ALL AIRPORTS: From WHAEL on track 027° to cross PIEGY at 7000, then on track 027° to COWZZ, then on track 027° to cross MUTWO at 5000, then on track 070°. Expect RADAR vectors to final approach course.

PIEGY ONE ARRIVAL (RNAV)

HOUSTON, TEXAS

(WHAEL.PIEGY1) 29DEC22