

APP CRS	Rwy Idg	<b>3704</b>
<b>132°</b>	TDZE	<b>819</b>
	Apt Elev	<b>827</b>

# RNAV (GPS) RWY 13

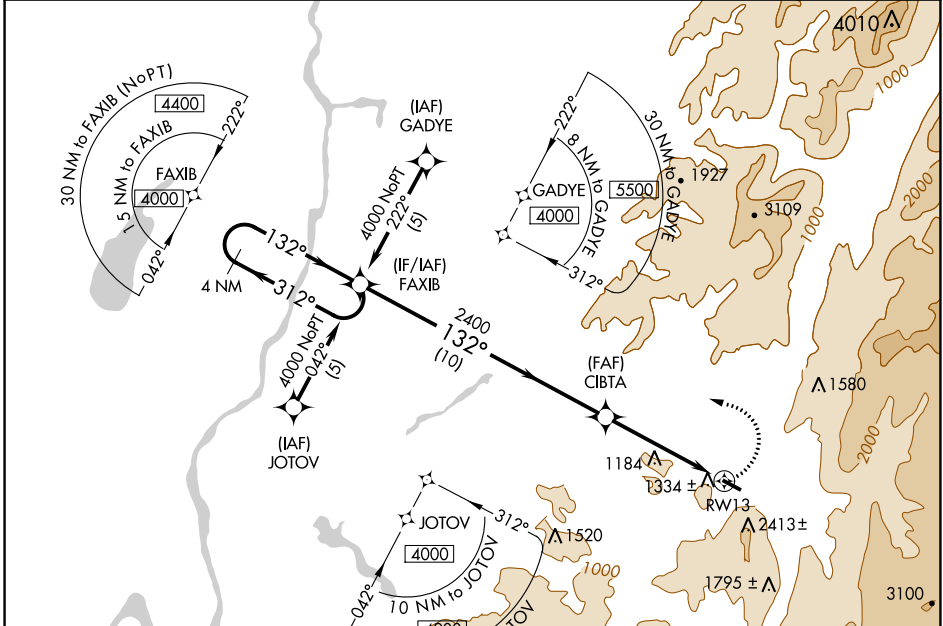
WILLIAM H MORSE STATE (DDH)

RNP APCH - GPS.

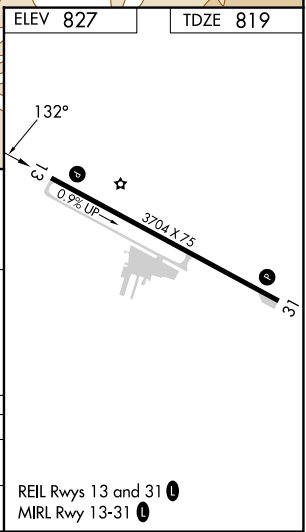
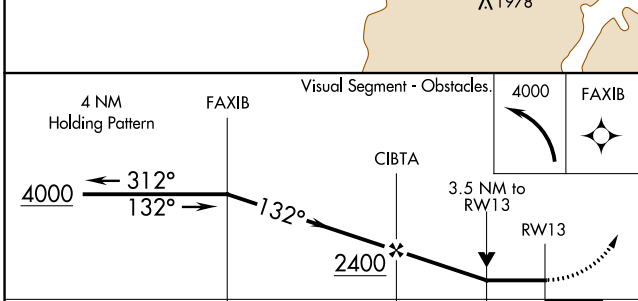
**NA** Rwy 13 helicopter visibility reduction below 3/4 SM NA. Circling Rwy 31 NA at night. When VGSi inop, procedure NA at night. When local altimeter setting not received, procedure NA. Circling NA southwest of Rwy 13-31.

**MISSED APPROACH:**  
 (Do not exceed 210K until FAXIB)  
 Climbing left turn to 4000 direct FAXIB and hold.

ASOS <b>135.925</b>	ALBANY APP CON <b>132.825 307.2</b>	GCO <b>121.725</b>	UNICOM <b>122.8 (CTAF) 0</b>
------------------------	--	-----------------------	---------------------------------



ELEV 827	TDZE 819
----------	----------



CATEGORY	A	B	C	D
LNVA MDA	2360-1 1/4 1541 (1600-1 1/4)	2360-1 1/2 1541 (1600-1 1/2)	2360-3 1541 (1600-3)	NA
<b>C</b> CIRCLING	2360-1 1/4 1533 (1600-1 1/4)	2360-1 1/2 1533 (1600-1 1/2)	2360-3 1533 (1600-3)	NA

REIL Rwy 13 and 31 0  
 MIRL Rwy 13-31 0

NE-1, 03 OCT 2024 to 31 OCT 2024

NE-1, 03 OCT 2024 to 31 OCT 2024