

VOR/DME OAB <b>109.8</b> Chan <b>35</b>	APP CRS <b>118°</b>	Rwy Idg TDZE Apt Elev <b>4579</b>	<b>N/A</b> <b>N/A</b> <b>4579</b>
---	------------------------	--------------------------------------	---

# VOR-A

CANYONLANDS RGNL (CNY)

DME required.

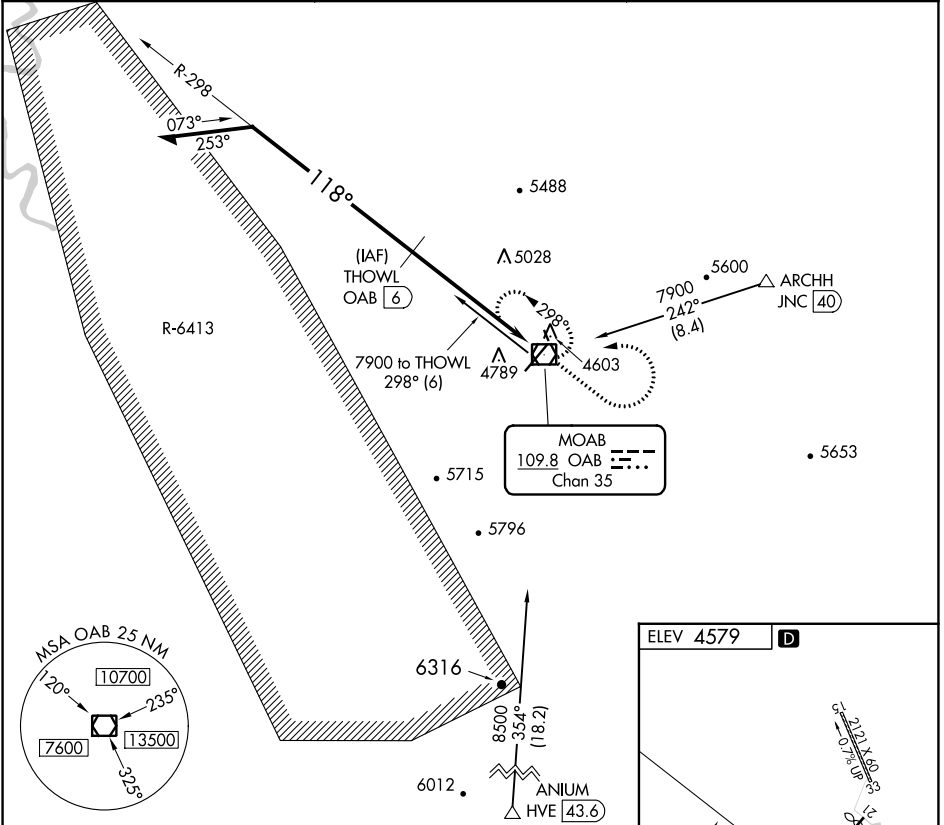
- ▼ Circling NA to Rwys 15 and 33.
- ▲ Rwy 3 helicopter visibility reduction below 3/4 SM NA. Procedure NA when R-6413 in operation.

MISSED APPROACH: Climb to 7100 then climbing left turn to 8700 direct OAB VOR/DME and hold, continue climb-in-hold to 8700.

ASOS  
**118.525**

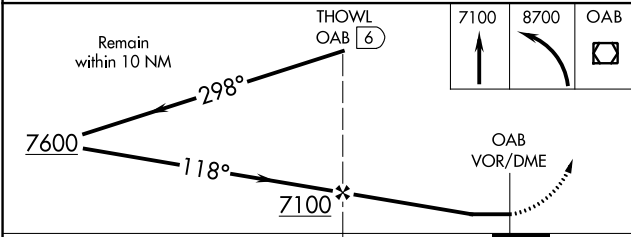
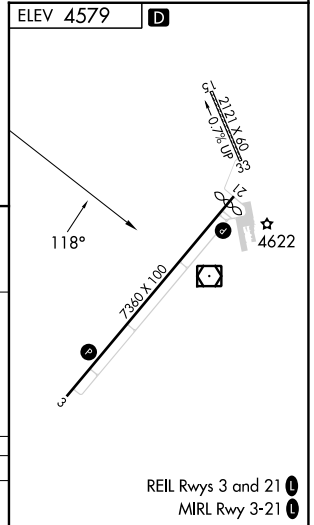
DENVER CENTER  
**134.5 327.8**

UNICOM  
**122.8 (CTAF) 0**



SW-4, 03 OCT 2024 to 31 OCT 2024

SW-4, 03 OCT 2024 to 31 OCT 2024



CATEGORY	A	B	C	D
☐ CIRCLING	5120-1 541 (600-1)	5200-1 621 (700-1)	5640-3 1061 (1100-3)	6220-3 1641 (1700-3)