

APP CRS <b>214°</b>	Rwy Idg <b>5000</b>
	TDZE <b>48</b>
	Apt Elev <b>48</b>

# RNAV (GPS) RWY 21

ACCOMACK COUNTY (MFLV)

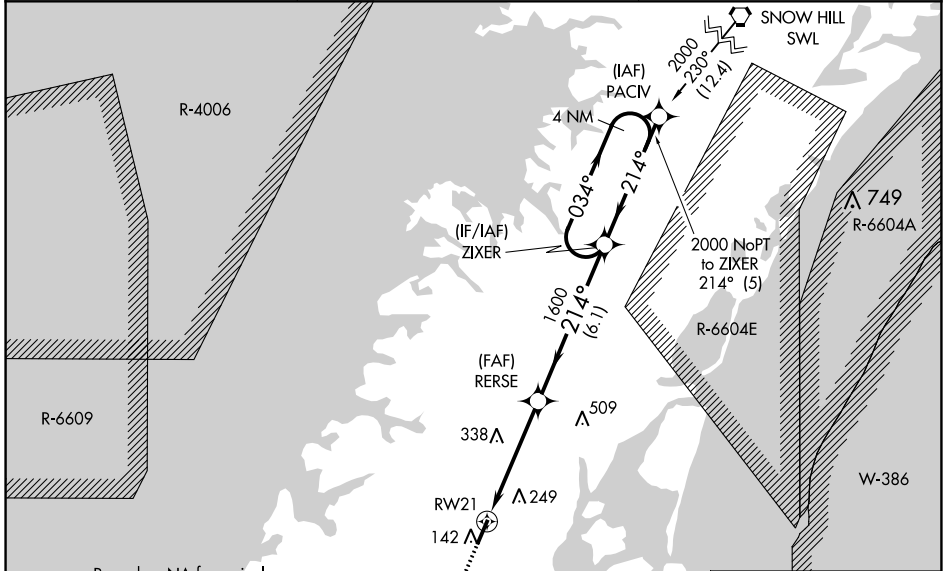
RNP APCH.  
 Rwy 21 helicopter visibility reduction below 3/4 SM NA.

MISSED APPROACH: Climb to 2000 direct UCGEL and hold.

AWOS-3  
**118.175**

PATUXENT APP CON\*  
**127.95 314.0**

UNICOM  
**122.8 (CTAF) 0**

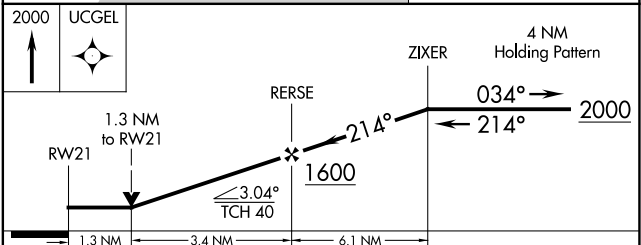
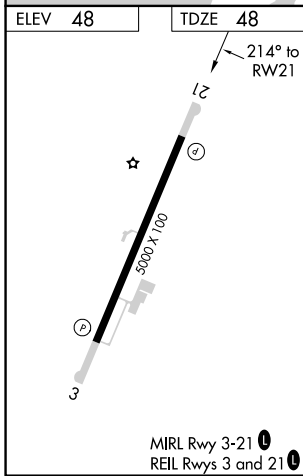
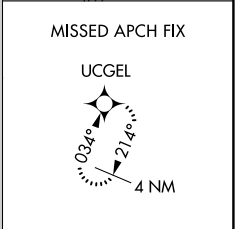


NE-3, 03 OCT 2024 to 31 OCT 2024

NE-3, 03 OCT 2024 to 31 OCT 2024

Procedure NA for arrival on CCV VORTAC airway radials 323 CW 041.

CAPE CHARLES  
CCV



CATEGORY	A	B	C	D
LNAV MDA	500-1	452 (500-1)	500-1 3/8	452 (500-1 3/8)
CIRCLING	500-1	560-1	700-1 3/4	700-2
	452 (500-1)	512 (600-1)	652 (700-1 3/4)	652 (700-2)