

WAAS CH 58013 W09A	APP CRS 088°	Rwy Idg TDZE Apt Elev	5100 916 926
----------------------------------------	------------------------	-----------------------------	-----------------------------------------

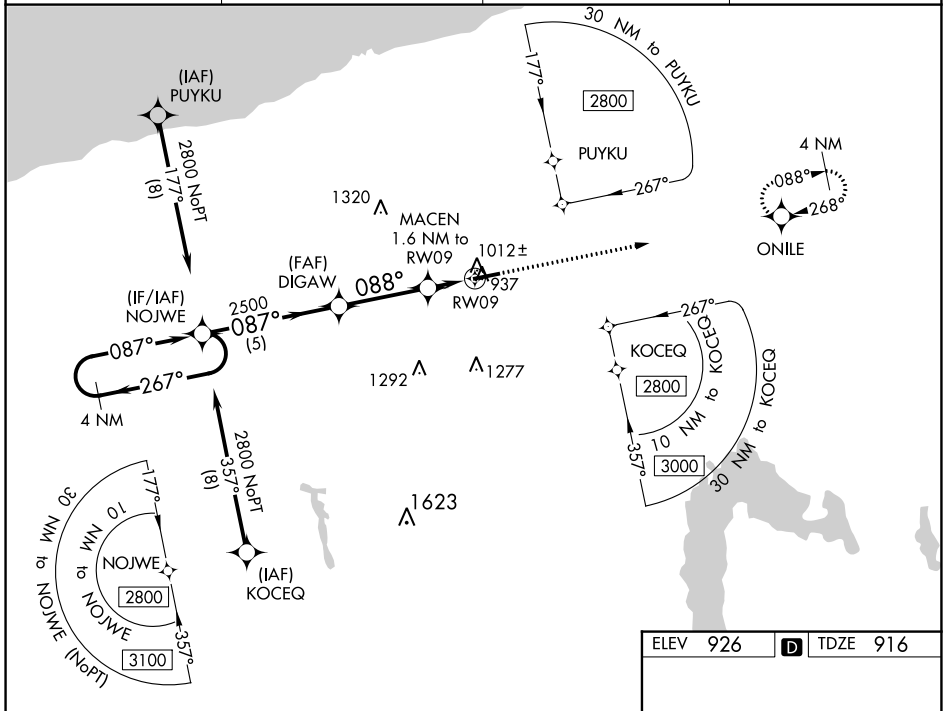
RNAV (GPS) RWY 9

NORTHEAST OHIO RGNL (HZY)

For uncompensated Baro-VNAV systems, LNAV/VNAV NA below -21°C (-5°F) or above 54°C (130°F). DME/DME RNP-0.3 NA.

MISSED APPROACH: Climb to 3000 direct ONILE and hold.

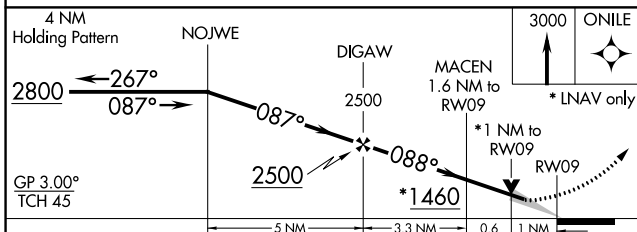
ASOS 118.325	BUFFALO APP CON * 121.0	UNICOM 122.8 (CTAF)	123.3 0
------------------------	-----------------------------------	-------------------------------	-----------------------



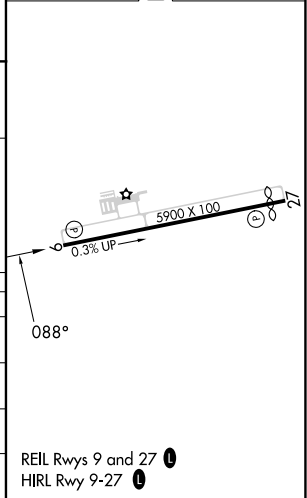
EC-2, 03 OCT 2024 to 31 OCT 2024

EC-2, 03 OCT 2024 to 31 OCT 2024

ELEV 926	D TDZE 916
----------	-------------------



CATEGORY	A	B	C	D
LPV DA		1166-7/8	250 (300-7/8)	
LNAV/VNAV DA		1182-7/8	266 (300-7/8)	
LNAV MDA		1280-1	364 (400-1)	
C CIRCLING	1340-1 414 (500-1)	1380-1 454 (500-1)	1500-1 1/2 574 (600-1 1/2)	1580-2 654 (700-2)



REIL Rwy 9 and 27 **0**
HIRL Rwy 9-27 **0**