

APP CRS	Rwy Idg	<b>5001</b>
<b>108°</b>	TDZE	<b>790</b>
	Apt Elev	<b>790</b>

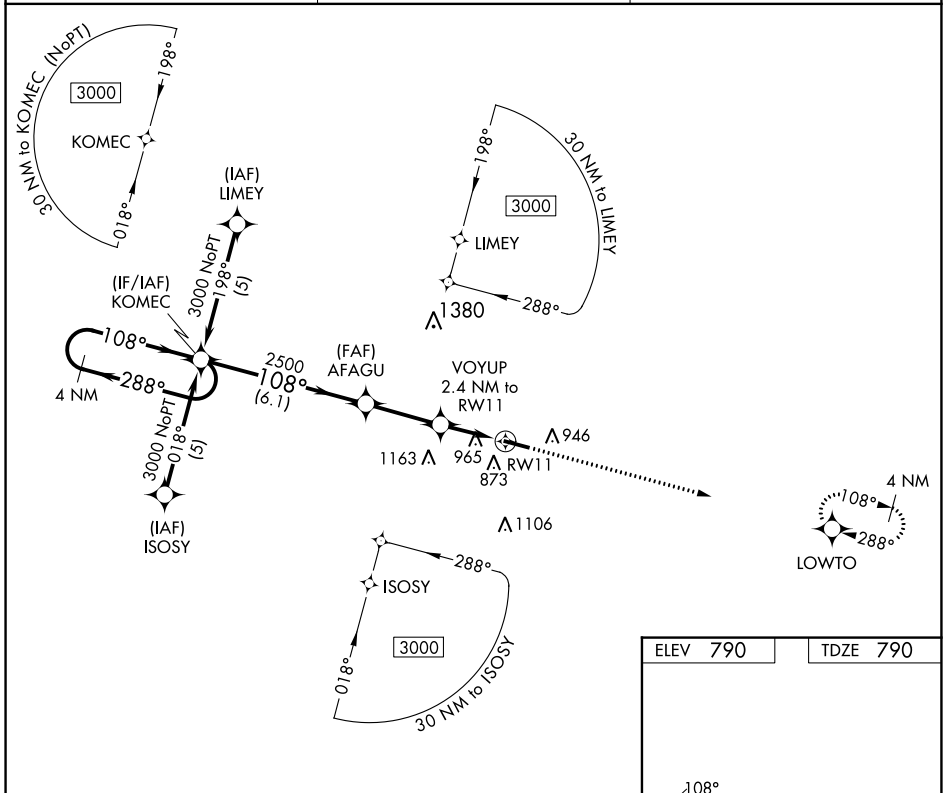
# RNAV (GPS) RWY 11

FULTON COUNTY (R.C.R)

**⚠** DME/DME RNP-0.3 NA. Visibility reduction by helicopters NA. When local altimeter setting not received, use Goshen altimeter setting: increase all MDA 100 feet and visibility LNAV Cats C and D and Circling Cats C and D ¼ SM.

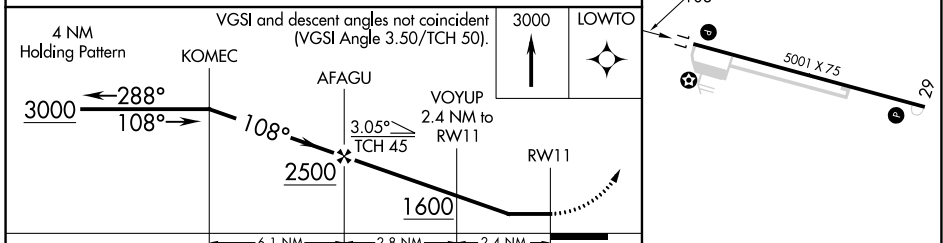
**⚠** MISSED APPROACH: Climb to 3000 direct LOWTO and hold.

AWOS-3 <b>118.775</b>	SOUTH BEND APP CON ★ <b>132.05 257.8</b>	UNICOM <b>122.7 (CTAF) 0</b>
--------------------------	---	---------------------------------



EC-2, 03 OCT 2024 to 31 OCT 2024

EC-2, 03 OCT 2024 to 31 OCT 2024



CATEGORY	A	B	C	D
LNAV MDA	1220-1	430 (500-1)	1220-1¼ 430 (500-1¼)	1220-1½ 430 (500-1½)
CIRCLING	1280-1 490 (500-1)	1360-1 570 (600-1)	1480-2 690 (700-2)	1620-2¾ 830 (900-2¾)

