

| | | | |
|--|------------------------|-----------------------------|---|
| WAAS CH 48809 W29A | APP CRS 288° | Rwy Idg TDZE Apt Elev | 5001 790 790 |
|--|------------------------|-----------------------------|---|

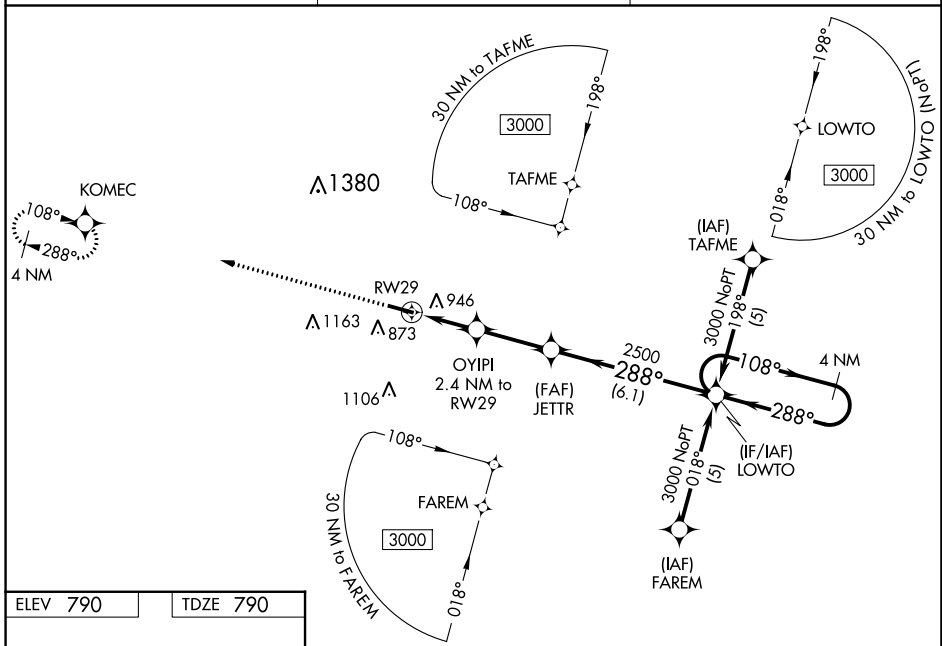
RNAV (GPS) RWY 29

FULTON COUNTY (R.C.R.)

⚠ DME/DME RNP-0.3 NA. Visibility reduction by helicopters NA. For uncompensated Baro-VNAV systems, LNAV/VNAV NA below -16°C (4°F) or above 47°C (116°F).
⚠ When local altimeter setting not received, use Goshen altimeter setting: increase LPV DA to 1208 feet and visibility all Cats ½ SM; increase LNAV/VNAV DA to 1325 and visibility all Cats ½ SM; increase all MDA 100 feet and visibility LNAV Cats C and D and Circling Cats C and D ¼ SM. Baro-VNAV and VDP NA when using Goshen altimeter setting.

MISSED APPROACH: Climb to 3000 direct KOMEC and hold.

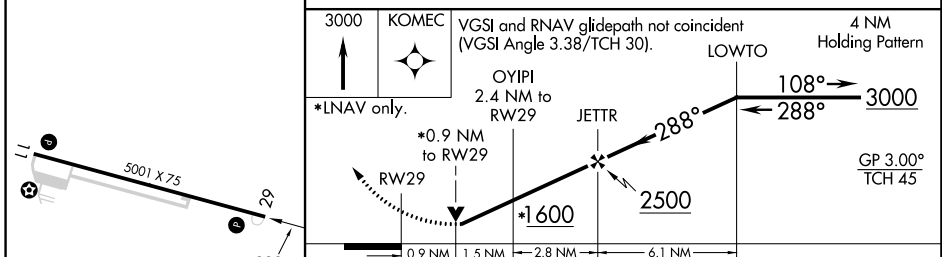
| | | |
|--------------------------|--|---------------------------------|
| AWOS-3 118.775 | SOUTH BEND APP CON* 132.05 257.8 | UNICOM 122.7 (CTAF) 0 |
|--------------------------|--|---------------------------------|



EC-2, 03 OCT 2024 to 31 OCT 2024

EC-2, 03 OCT 2024 to 31 OCT 2024

| | |
|----------|----------|
| ELEV 790 | TDZE 790 |
|----------|----------|



| CATEGORY | A | B | C | D |
|--------------|-----------------------|-----------------------|-----------------------|-------------------------|
| LPV DA | | 1127-1¼ | 337 (400- 1¼) | |
| LNAV/VNAV DA | | 1244-1½ | 454 (500- 1½) | |
| LNAV MDA | 1200-1 | 410 (500-1) | 1200-1¼ | 410 (500-1¼) |
| CIRCLING | 1280-1 490 (500-1) | 1360-1 570 (600-1) | 1480-2 690 (700-2) | 1620-2¾ 830 (900-2¾) |

REIL Rwy 11 and 29
MIRL Rwy 11-29