

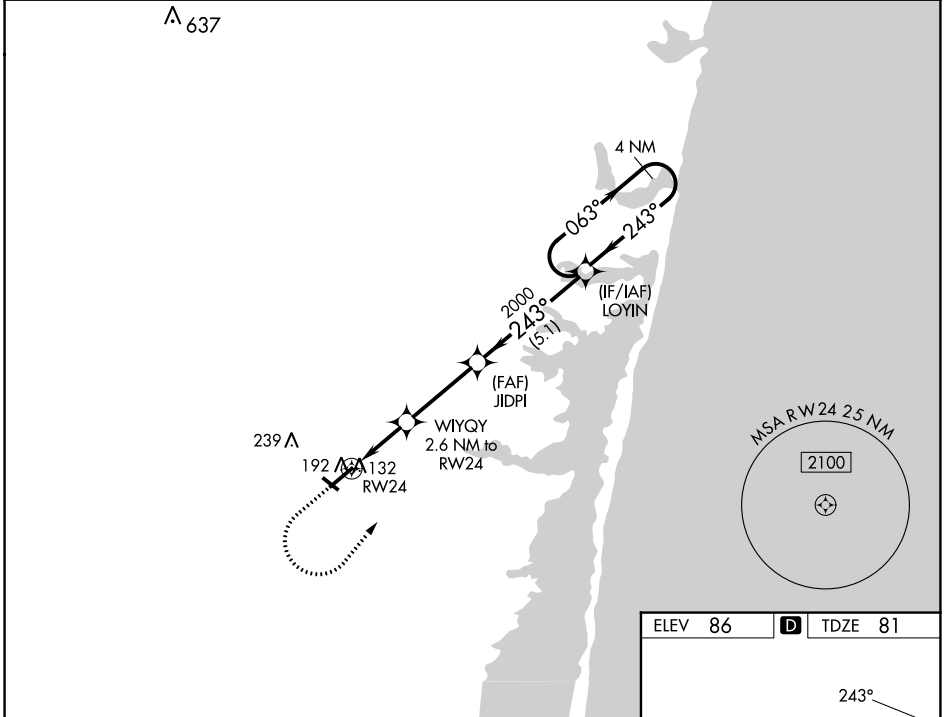
WAAS CH 86433 W24A	APP CRS 243°	Rwy Idg TDZE Apt Elev	5835 81 86
--	------------------------	-----------------------------	---------------------------------------

RNAV (GPS) RWY 24

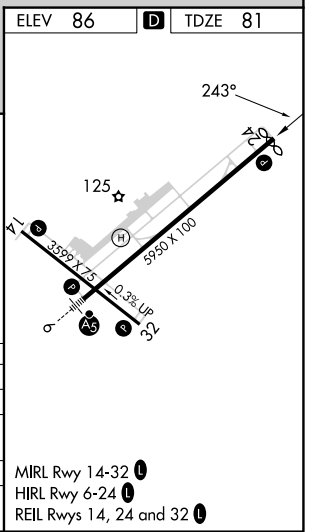
OCEAN COUNTY (MJX)

RNP APCH - GPS.	MISSED APPROACH: Climb to 600 then climbing left turn to 2000 direct to LOYIN and hold.
<p>▼ Circling Rwy 14, 32 NA at night. For uncompensated Baro-VNAV systems, LNAV/VNAV NA below -15°C or above 43°C. Rwy 24 helicopter visibility reduction below ¼ SM NA.</p>	

AWOS-3PT 119.875	MC GUIRE APP CON 126.475 363.8	UNICOM 122.7 (CTAF)
----------------------------	--	-------------------------------



600	2000	LOYIN	VGSI and RNAV glidepath not coincident (VGSI Angle 3.00/TCH 55).			
		WYQY 2.6 NM to RW24	JIDPI 2000	LOYIN	4 NM Holding Pattern	
		1.1 NM to RW24	1.5 NM	3.3 NM	5.1 NM	2000
		940	2000	243°	063°	2000
		GP 3.00°		TCH 40		
CATEGORY	DA	A	B	C	D	
LPV	DA		331-¾	250 (300-¾)		
LNAV/VNAV	DA		358-7/8	277 (300-7/8)		
LNAV	MDA		460-1	379 (400-1)		
CIRCLING		540-1	560-1	580-1½	700-2	
		454 (500-1)	474 (500-1)	494 (500-1½)	614 (700-2)	



NE-2, 03 OCT 2024 to 31 OCT 2024

NE-2, 03 OCT 2024 to 31 OCT 2024