

WAAS CH 56404 W06A	APP CRS 054°	Rwy Idg TDZE Apt Elev	5504 859 859
--	------------------------	-----------------------------	---

RNAV (GPS) RWY 6

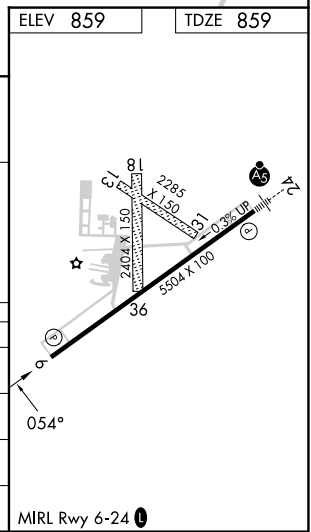
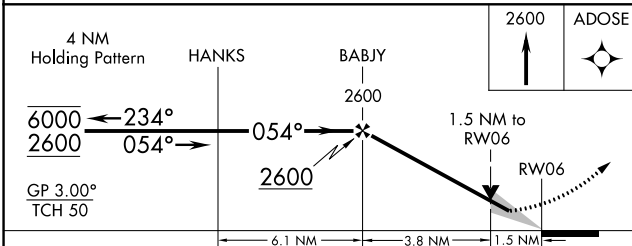
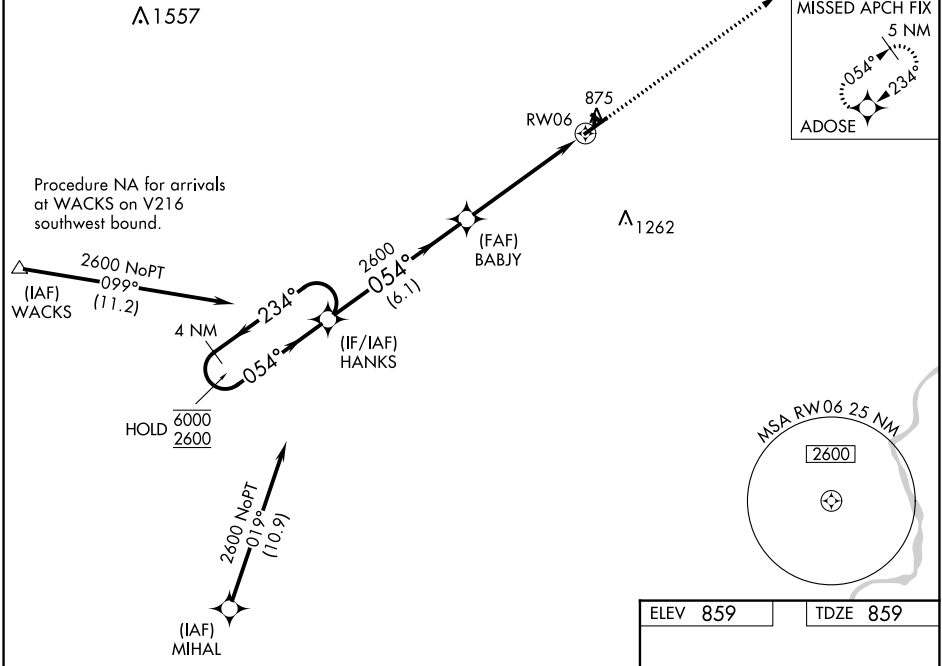
ALBERTUS (FEP)

RNP APCH - GPS.

⚠ Circling NA to Rwy 13, 18, 31, and 36.
For uncompensated Baro-VNAV systems,
LNAV/VNAV NA below -16°C or above 54°C.

MISSED APPROACH:
Climb to 2600 direct
ADOSE and hold.

AWOS-3 120.525	ROCKFORD APP CON 126.0 327.0	CLNC DEL 121.85	UNICOM 122.8 (CTAF) 0
--------------------------	--	---------------------------	---------------------------------



CATEGORY	A	B	C	D
LPV DA		1109-3/4	250 (300-3/4)	
LNAV/VNAV DA		1371-13/8	512 (600-13/8)	
LNAV MDA	1380-1	521 (600-1)	1380-1 1/2	521 (600-1 1/2)
CIRCLING	1380-1 521 (600-1)	1400-1 541 (600-1)	1440-1 1/2 581 (600-1 1/2)	1620-2 1/2 761 (800-2 1/2)

EC-3, 03 OCT 2024 to 31 OCT 2024

EC-3, 03 OCT 2024 to 31 OCT 2024