

WAAS CH 70414 W36A	APP CRS 008°	Rwy Idg TDZE 226 Apt Elev 226	4999
--	------------------------	---	-------------

RNAV (GPS) RWY 36

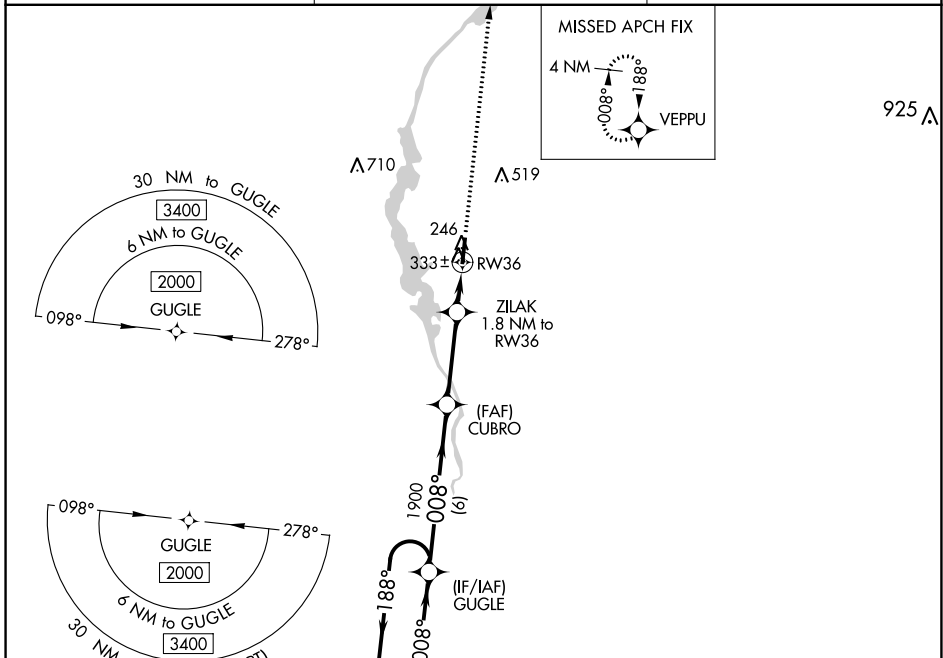
MONROE COUNTY (M40)

RNP APCH.

For uncompensated Baro-VNAV systems, LNAV/VNAV NA below -15°C or above 54°C. Rwy 36 helicopter visibility reduction below 3/4 SM NA.

MISSED APPROACH: Climb to 2000 direct VEPPU and hold.

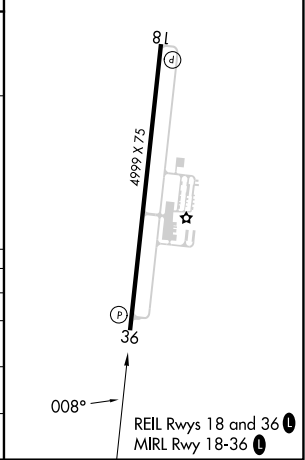
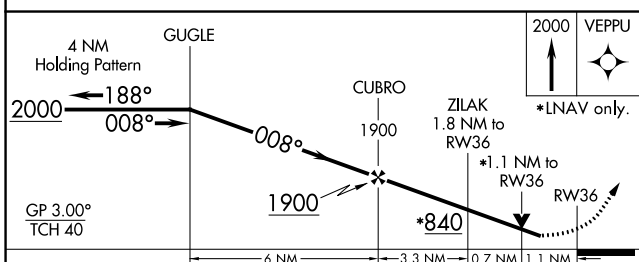
AWOS-3P 118.475	COLUMBUS APP CON ★ 126.075 239.25	UNICOM 122.8 (CTAF) 0
---------------------------	---	---------------------------------



SC-4, 03 OCT 2024 to 31 OCT 2024

SC-4, 03 OCT 2024 to 31 OCT 2024

ELEV 226	TDZE 226
----------	----------



CATEGORY	A	B	C	D
LPV DA		506-7/8	280 (300-7/8)	
LNAV/VNAV DA		624-11/8	398 (400-11/8)	
LNAV MDA		600-1	374 (400-1)	
CIRCLING	660-1	680-1	820-11/2	860-2
	434 (500-1)	454 (500-1)	594 (600-11/2)	634 (700-2)