

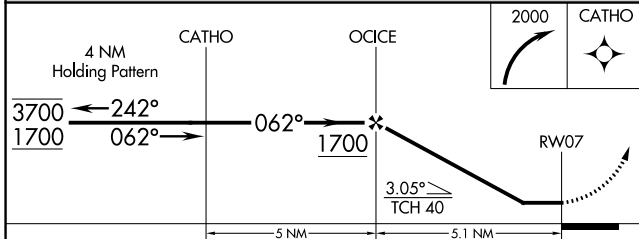
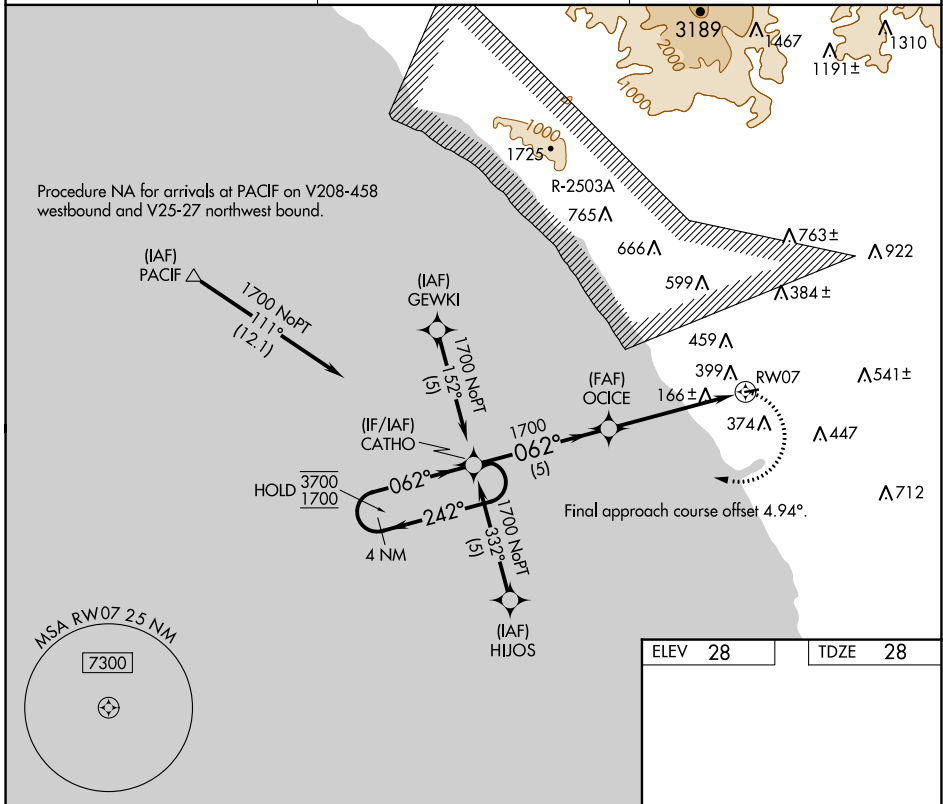
APP CRS	Rwy ldg	2712
062°	TDZE	28
	Apt Elev	28

RNAV (GPS) RWY 7

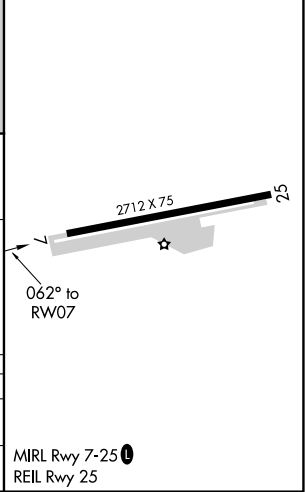
BOB MAXWELL MEML AIRFIELD (OKB)

RNP APCH-GPS.	MISSED APPROACH: Climbing right turn to 2000 direct CATHO and hold.
<p>▼ Rwy 7 helicopter visibility reduction below 1 SM NA.</p> <p>▲ NA Rwy 7 Straight-in and Circling minimums NA at night.</p>	

ASOS 127.8	SOCAL APP CON 127.3 323.0	UNICOM 122.725 (CTAF) 0
----------------------	-------------------------------------	-----------------------------------



ELEV 28	TDZE 28
---------	---------



CATEGORY	A	B	C	D
LNAV MDA	660-1	632 (700-1)		NA
CIRCLING	720-1 692 (700-1)	840-1¼ 812 (900-1¼)		NA

MIRL Rwy 7-25 0
REIL Rwy 25

SW-3, 03 OCT 2024 to 31 OCT 2024

SW-3, 03 OCT 2024 to 31 OCT 2024