

(TIFTO8.MCI) 23278

# TIFTO EIGHT DEPARTURE

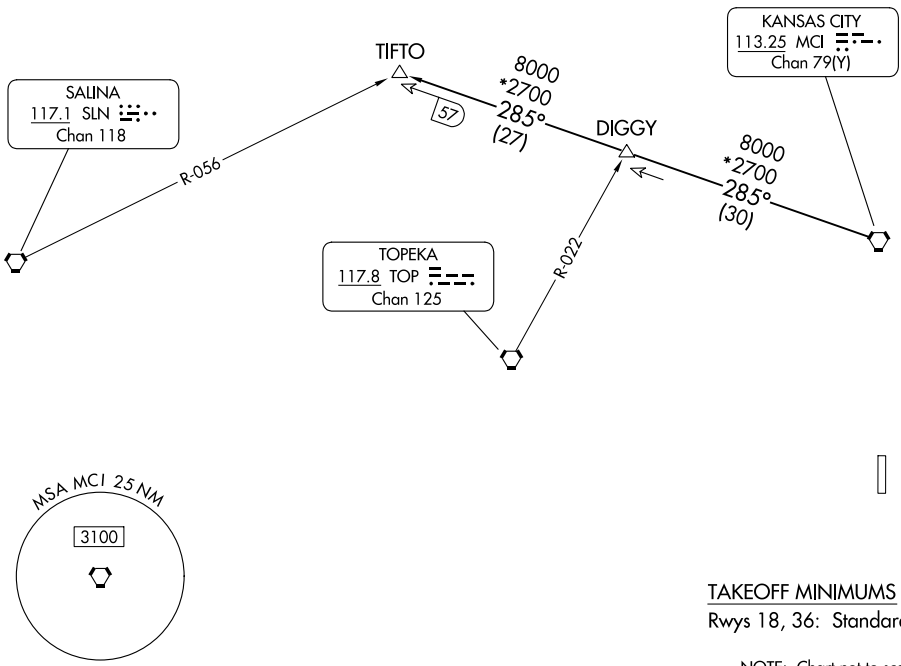
AL-5687 (FAA)

JOHNSON COUNTY EXEC (OJC)  
OLATHE, KANSAS

**TOP ALTITUDE:  
10000**

RADAR and DME required.

KANSAS CITY DEP CON  
118.9 251.075  
ATIS  
119.35



NC-2, 03 OCT 2024 to 31 OCT 2024

NC-2, 03 OCT 2024 to 31 OCT 2024



## DEPARTURE ROUTE DESCRIPTION

TAKEOFF ALL RUNWAYS: Climb on assigned heading for RADAR vectors to appropriate route. Maintain 10000, expect filed altitude 10 minutes after departure.

TIFTO TRANSITION (TIFTO8.TIFTO): From over MCI VORTAC on MCI R-285 to TIFTO.

**TIFTO EIGHT DEPARTURE**  
(TIFTO8.MCI) 05OCT23

OLATHE, KANSAS  
JOHNSON COUNTY EXEC (OJC)