

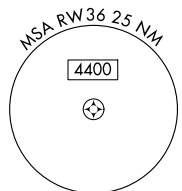
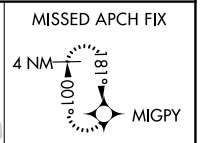
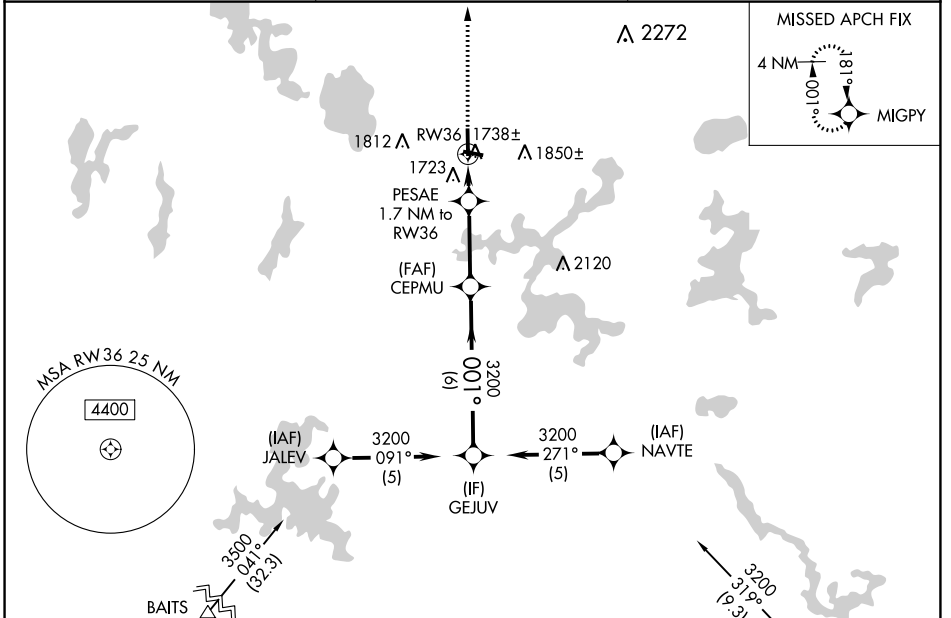
WAAS CH 49115 W36A	APP CRS 001°	Rwy Idg TDZE Apt Elev	5150 1627 1630
--	------------------------	-----------------------------	---

RNAV (GPS) RWY 36

LAKELAND/NOBLE F LEE MEML FLD (A.R.V)

RNP APCH.	MALSRL A5	MISSED APPROACH: Climb to 3300 direct MIGPY and hold.
-----------	--------------	---

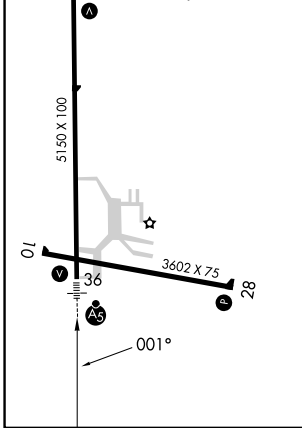
AWOS-3 121.125	MINNEAPOLIS CENTER 133.65 281.5	UNICOM 122.7 (CTAF)
--------------------------	---	-------------------------------



EC-3, 03 OCT 2024 to 31 OCT 2024

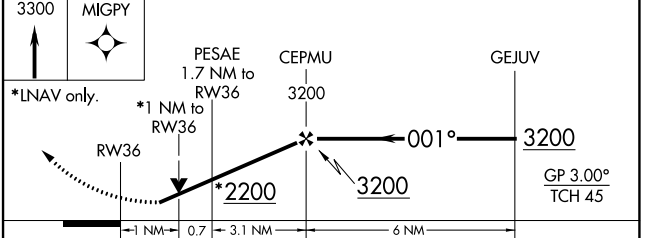
EC-3, 03 OCT 2024 to 31 OCT 2024

ELEV 1630	TDZE 1627
MIRL Rwy 10-28	HIRL Rwy 18-36
REIL Rwy 18 and 28	



Procedure NA for arrival on RHI VOR/DME airway radials 301 CW 021.

RHINELANDER RHI



CATEGORY	A	B	C	D
LPV DA		1948-1	321 (400-1)	
LNAV/VNAV DA		1999-1	372 (400-1)	
LNAV MDA		2000-1	373 (400-1)	
C CIRCLING	2100-1 470 (500-1)	2200-1 570 (600-1)	2200-1½ 570 (600-1½)	2220-2 590 (600-2)