

VORTAC SPI <b>112.7</b> Chan <b>74</b>	APP CRS <b>041°</b>	Rwy Idg <b>4000</b> TDZE <b>593</b> Apt Elev <b>594</b>
----------------------------------------------	------------------------	---------------------------------------------------------------

# VOR RWY 3

LOGAN COUNTY (AAA)

DME or RADAR required.

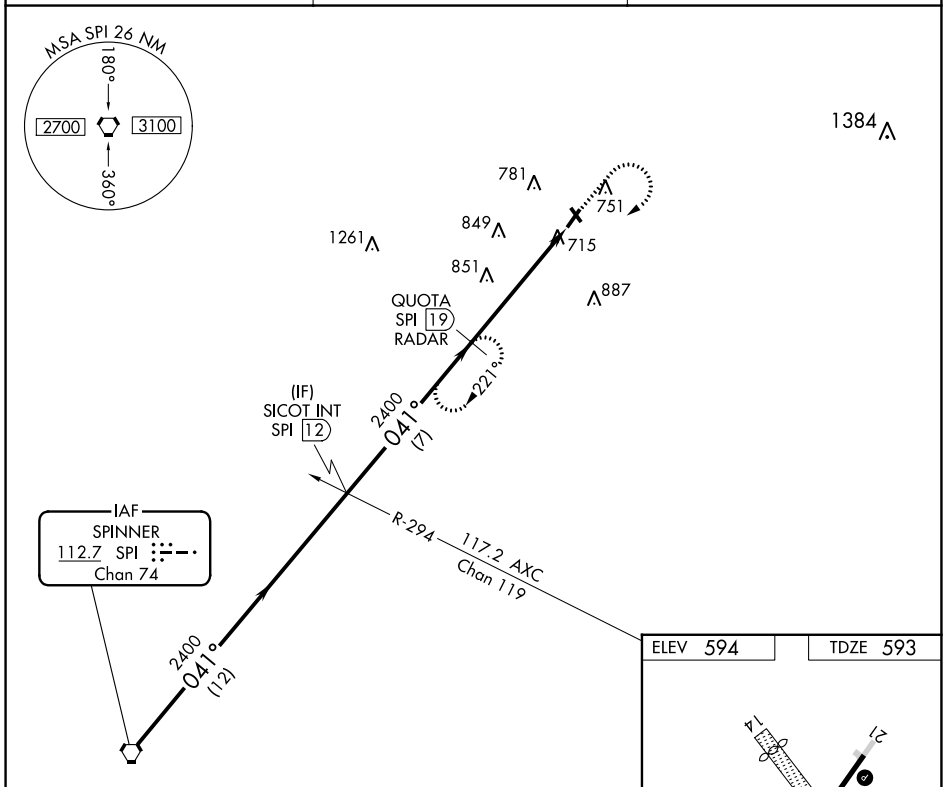
- ⚠ When local altimeter setting not received, use Springfield, IL altimeter setting and increase all MDAs 60 feet, increase Circling Cat C/D visibility ¼ SM. Circling NA to Rwy 14 and 32. Rwy 3 helicopter visibility reduction below ¾ SM NA.

MISSED APPROACH: Climb to 2000 then climbing right turn to 2400 via SPI R-041 to QUOTA/19 DME/RADAR and hold.

AWOS-3  
**118.775**

SAINT LOUIS APP CON ★  
**126.15 323.0**

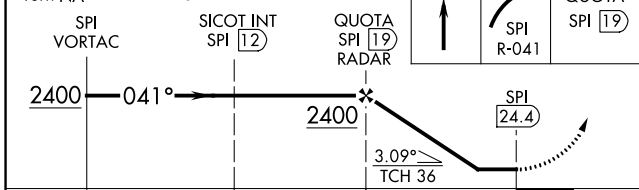
UNICOM  
**122.8 (CTAF) 0**



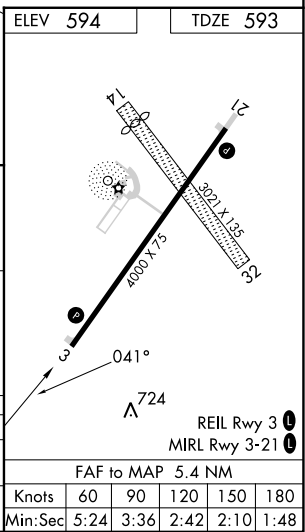
EC-3, 03 OCT 2024 to 31 OCT 2024

EC-3, 03 OCT 2024 to 31 OCT 2024

Procedure Turn NA VGSIs and descent angles not coincident (VGSIs Angle 3.50/TCH 26). 2000 2400 QUOTA SPI 19



CATEGORY	A	B	C	D
S-3	1120-1 527 (600-1)	1120-1¼ 527 (600-1¼)	1120-1½ 527 (600-1½)	1120-1¾ 527 (600-1¾)
CIRCLING	1140-1 546 (600-1)	1140-1¼ 546 (600-1¼)	1280-2 686 (700-2)	1280-2¼ 686 (700-2¼)



REIL Rwy 3 0	MIRL Rwy 3-21 0				
FAF to MAP 5.4 NM					
Knots	60	90	120	150	180
Min:Sec	5:24	3:36	2:42	2:10	1:48