

| | | |
|--|------------------------|-----------------|
| WAAS CH 58012 W27A | APP CRS 270° | Rwy ldg 5445 |
| | | TDZE 588 |
| | | Apt Elev 590 |

RNAV (GPS) RWY 27

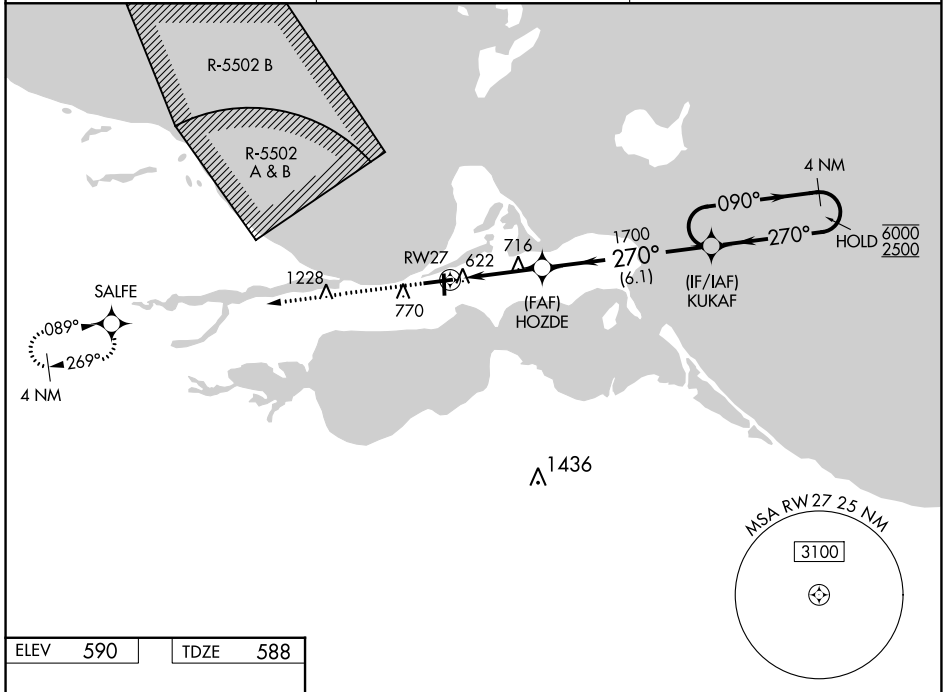
ERIE-OTTAWA INTL (PCW)

RNP APCH - GPS.

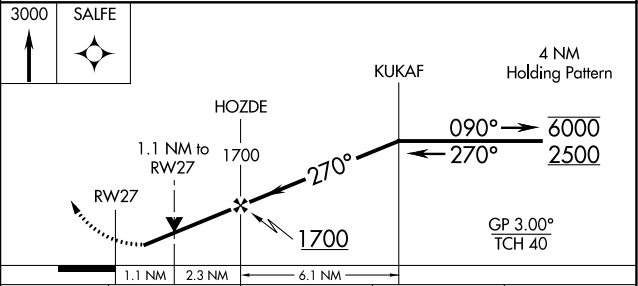
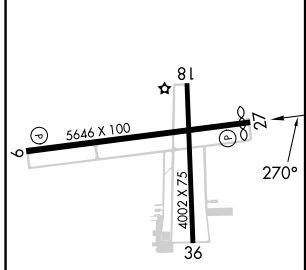
▼ Circling Rwy 18, 36 NA at night. Rwy 27 helicopter visibility reduction below 1 SM NA.
 ▲ For uncompensated Baro-VNAV systems, LNAV/VNAV NA below -16°C or above 54°C.

MISSED APPROACH:
 Climb to 3000 direct
 SALFE and hold.

| | | |
|--------------------------|--|---------------------------------|
| AWOS-3 118.775 | CLEVELAND APP CON 126.35 346.325 | UNICOM 122.8 (CTAF) 0 |
|--------------------------|--|---------------------------------|



| | |
|----------|----------|
| ELEV 590 | TDZE 588 |
|----------|----------|



| CATEGORY | A | B | C | D |
|--|--------|-------------|-------------------------|------------------------|
| LPV DA | | 842-1 | 254 (300-1) | |
| LNAV/VNAV DA | | 969-1½ | 381 (400-1½) | |
| LNAV MDA | 980-1 | 392 (400-1) | 980-1½ | 392 (400-1½) |
| <input checked="" type="checkbox"/> CIRCLING | 1140-1 | 550 (600-1) | 1180-1½ 590 (600-1½) | 1580-3 990 (1000-3) |

HIRL Rwy 9-27 0
 MIRL Rwy 18-36 0
 REL Rwy 9 and 27 0

EC-2, 03 OCT 2024 to 31 OCT 2024

EC-2, 03 OCT 2024 to 31 OCT 2024