

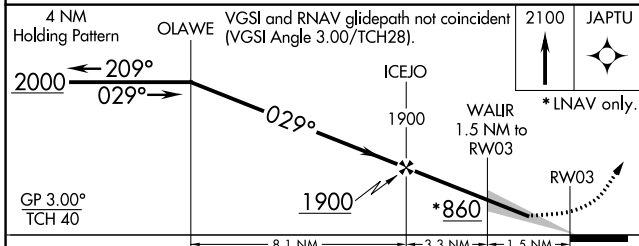
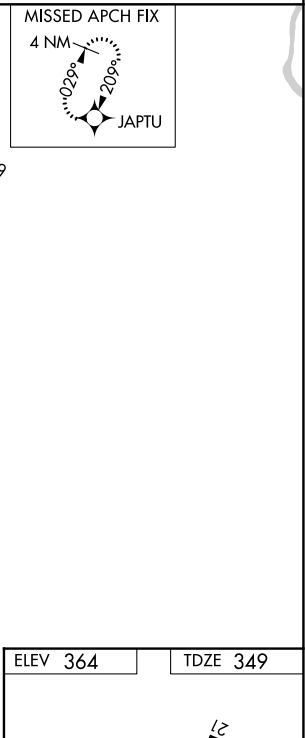
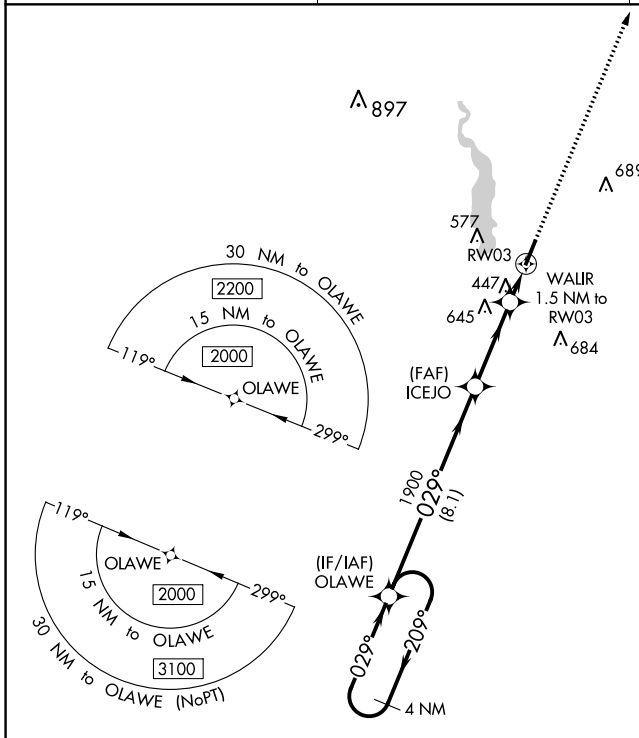
WAAS CH 87140 W03A	APP CRS 029°	Rwy Idg TDZE Apt Elev	5000 349 364
--	------------------------	-----------------------------	---

RNAV (GPS) RWY 3

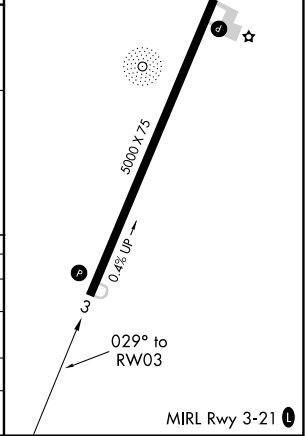
HARTSVILLE RGNL (HVS)

▼ For uncompensated Baro-VNAV systems, LNAV/VNAV NA below -9°C (15°F) or above 54°C (130°F). DME/DME RNP-0.3 NA. MISSED APPROACH: Climb to 2100 direct JAPTU and hold.

AWOS-3 118.225	SHAW APP CON ★ 125.4 318.1	UNICOM 122.8 (CTAF) 0
--------------------------	--------------------------------------	---------------------------------



CATEGORY	A	B	C	D
LPV DA	599-1	250 (300-1)		NA
LNAV/VNAV DA	599-1	250 (300-1)		NA
LNAV MDA	700-1	351 (400-1)		NA
Ⓢ CIRCLING	800-1 436 (500-1)	840-1 476 (500-1)	960-1½ 596 (600-1½)	NA



SE-2, 03 OCT 2024 to 31 OCT 2024

SE-2, 03 OCT 2024 to 31 OCT 2024