

LOC/DME I-RBW 110.15 Chan 38 (Y)	APP CRS 229°	Rwy ldg TDZE Apt Elev	6002 101 101
---	------------------------	-----------------------------	---

ILS Y or LOC Y RWY 23

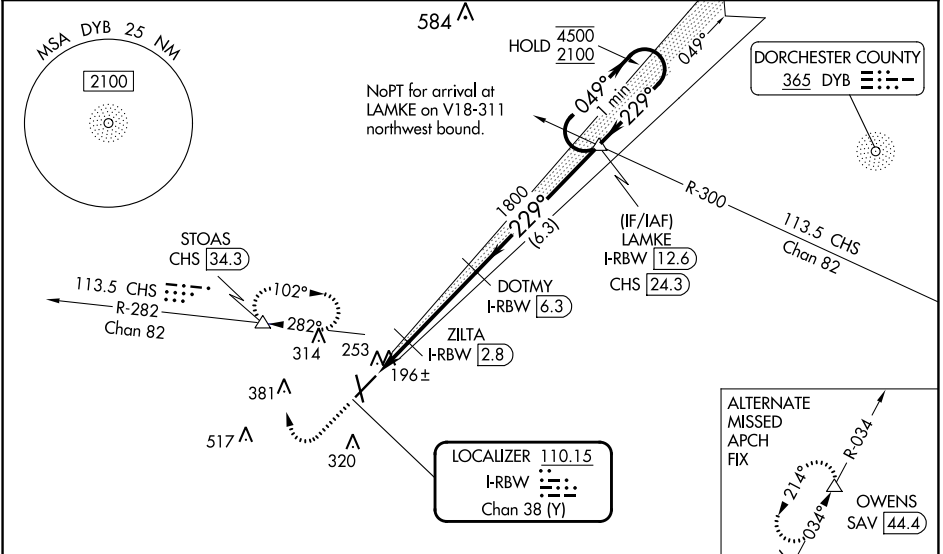
LOWCOUNTRY RGNL (R.B.W)

DME required.

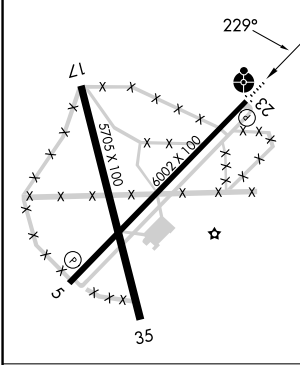
ODALS

MISSED APPROACH: Climb to 700 then climbing right turn to 2000 on heading 360° and CHS VORTAC R-282 to STOAS/CHS VORTAC 34.3 DME and hold, continue climb-in-hold to 2000, or as directed by ATC.

AWOS-3PT 118.725	CHARLESTON APP CON 120.7 306.925	UNICOM 122.8 (CTAF)
----------------------------	--	-------------------------------



ELEV 101	TDZE 101
REIL Rwy 23	MIRL Rwy 5-23



700 2000

hdg 360°

STOAS CHS R-282

VGSI and ILS glidepath not coincident (VGSI Angle 3.00/TCH 46).

One Minute Holding Pattern

ZILTA I-RBW 2.8

DOTMY I-RBW 6.3

LAMKE I-RBW 12.6

I-RBW 1.1 2.1

680 1800 1800

049° 229°

4500 2100

GS 3.00° TCH 43

CATEGORY	A	B	C	D
S-ILS 23	301-3/4 200 (200-3/4)			
S-LOC 23	460-3/4	359 (400-3/4)	460-7/8	359 (400-7/8)
<input checked="" type="checkbox"/> CIRCLING	620-1	519 (600-1)	700-1 1/2	700-2
			599 (600-1 1/2)	599 (600-2)

FAF to MAP 5.2 NM

Knots	60	90	120	150	180
Min:Sec	5:12	3:28	2:36	2:05	1:44

SE-2, 03 OCT 2024 to 31 OCT 2024

SE-2, 03 OCT 2024 to 31 OCT 2024