

WAAS CH 48916 W35A	APP CRS 351°	Rwy Idg TDZE Apt Elev	5705 95 101
--	------------------------	-----------------------------	--

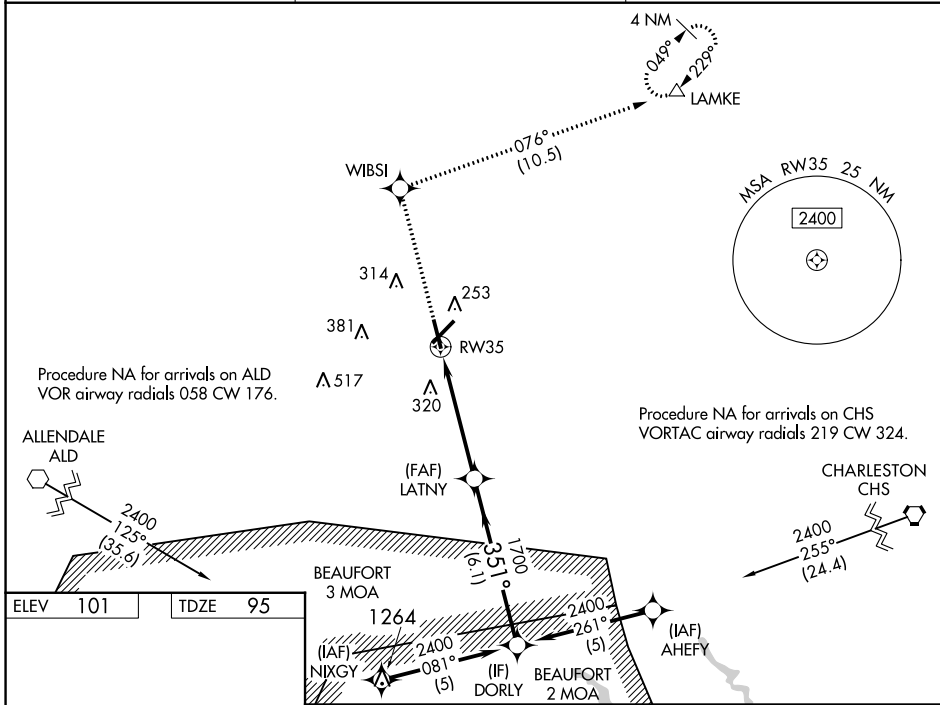
RNAV (GPS) RWY 35

LOWCOUNTRY RGNL (R.B.W)

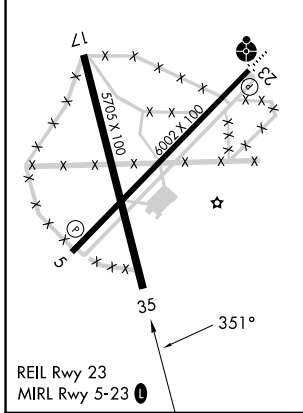
⚠ For uncompensated Baro-VNAV systems, LNAV/VNAV NA below -15°C (5°F) or above 54°C (130°F). Baro-VNAV and VDP NA when using Charleston AFB/Intl altimeter setting.
⚠ DME/DME RNP-0.3 NA. When local altimeter setting not received, use Charleston AFB/Intl altimeter setting: increase LPV DA to 476 feet and LNAV/VNAV DA to 525 feet and all MDA 80 feet; increase LPV visibility all Cats, LNAV/VNAV visibility all Cats, LNAV Cats C/D visibility, and Circling Cat D visibility ¼ mile; increase Circling Cat C visibility ½ mile.

MISSED APPROACH:
 Climb to 2100 direct WIBSI and on track 076° to LAMKE and hold.

AWOS-3PT 118.725	CHARLESTON APP CON 120.7 306.925	UNICOM 122.8 (CTAF) 0
----------------------------	--	---------------------------------



ELEV 101	TDZE 95
----------	---------



2100	WIBSI	tr 076°	LAMKE	DORLY	
*LNAV only.		*1.3 NM to RW35	LATNY	1700	2400
			GP 3.00°		TCH 40
CATEGORY		A	B	C	D
LPV	DA	398-1 303 (300-1)			
LNAV/VNAV	DA	447-1¼ 352 (400-1¼)			
LNAV	MDA	560-1 465 (500-1)	560-1¾ 465 (500-1¾)		
CIRCLING		620-1 519 (600-1)	640-1 539 (600-1)	700-1½ 599 (600-1½)	700-2 599 (600-2)

SE-2, 03 OCT 2024 to 31 OCT 2024

SE-2, 03 OCT 2024 to 31 OCT 2024