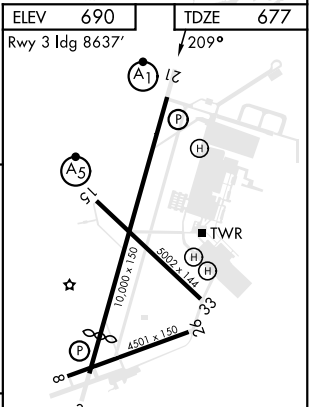
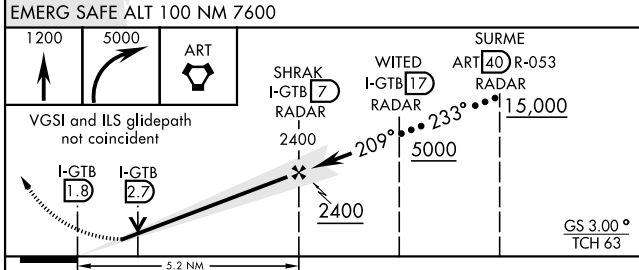
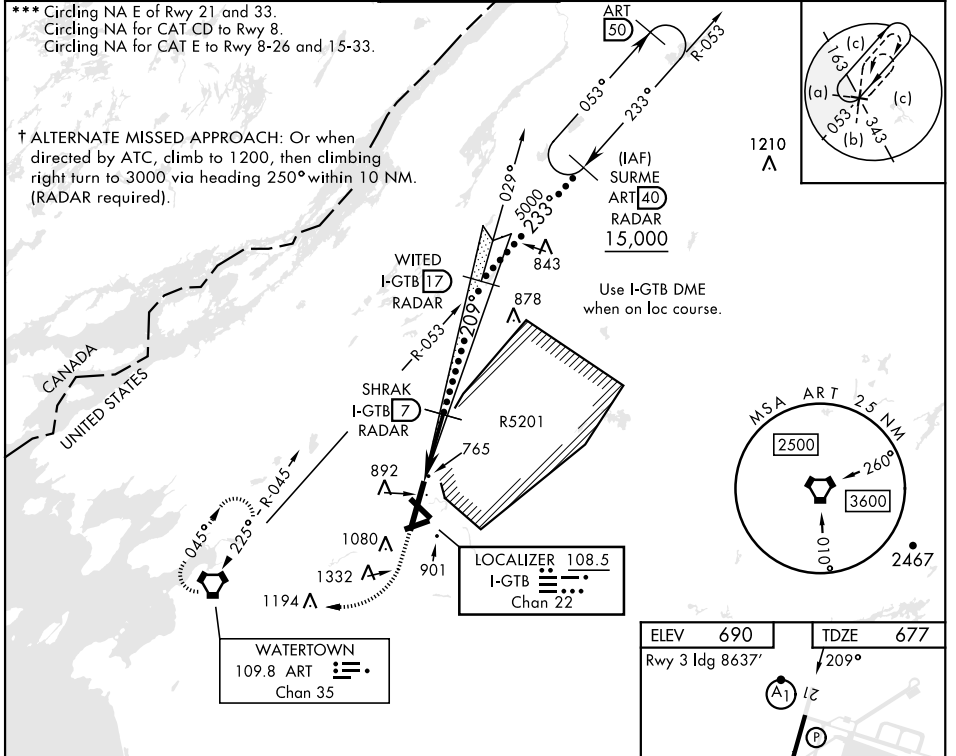


HI-ILS or LOC RWY 21

LOC/DME I-GTB 108.5 Chan 22	APCH CRS 209°	Rwy Idg 10,000 TDZE 677 Arprt Elev 690	AL-5754 [USA]	WHEELER-SACK AAF (KGTB)
---	-------------------------	---	---------------	-------------------------

DME or RADAR required.	ALSIF-1 	† MISSED APPROACH: Climb to 1200, then climbing right turn to 5000 direct ART VORTAC and hold. Continue climb in hold to 5000.
* When ALS inop, increase vis to ¾ mile. ** When ALS inop, increase CAT C vis to 1 mile, CAT DE vis to 1¼ miles.		

ATIS 119.525	APP CON 124.875 307.125	TOWER 118.75 290.25	GND CON 121.9 229.8	CLNC DEL 121.9	ASR/PAR
------------------------	-----------------------------------	-------------------------------	-------------------------------	--------------------------	---------



CATEGORY	C			D		E	
	1200-1½	530 (600-1½)	209°	1380-2¼	690 (700-2¼)	1640-3	950 (1000-3)
S-ILS 21*	877-½			200		(200-½)	
S-LOC 21**	1040-¾			363		(400-¾)	
CIRCLING ***	1220-1½			1380-2¼		1640-3	
	530 (600-1½)			690 (700-2¼)		950 (1000-3)	

FAF to MAP 5.2 NM					
Knots	120	140	160	180	200
Min:Sec	2:36	2:14	1:57	1:44	1:34

HI-ILS or LOC RWY 21

NE-2, 03 OCT 2024 to 31 OCT 2024

NE-2, 03 OCT 2024 to 31 OCT 2024

