

FORT DRUM, NEW YORK

ILS or LOC RWY 21

LOC/DME I-GTB 108.5 Chan 22	APCH CRS 209°	Rwy ldg 10,000 TDZE 677 Arpt Elev 690
---	-------------------------	--

AL-5754 [USA]

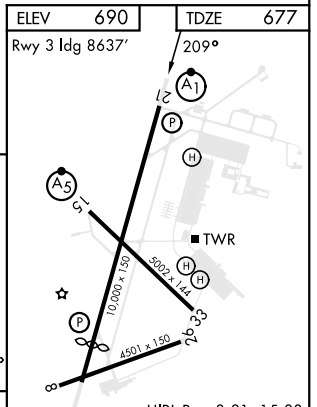
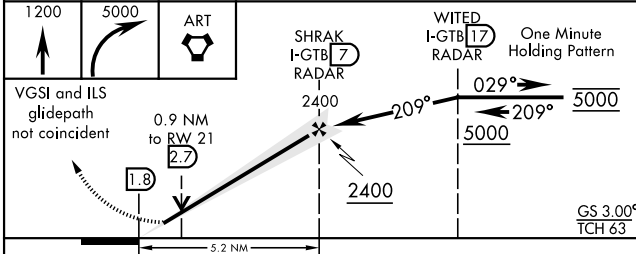
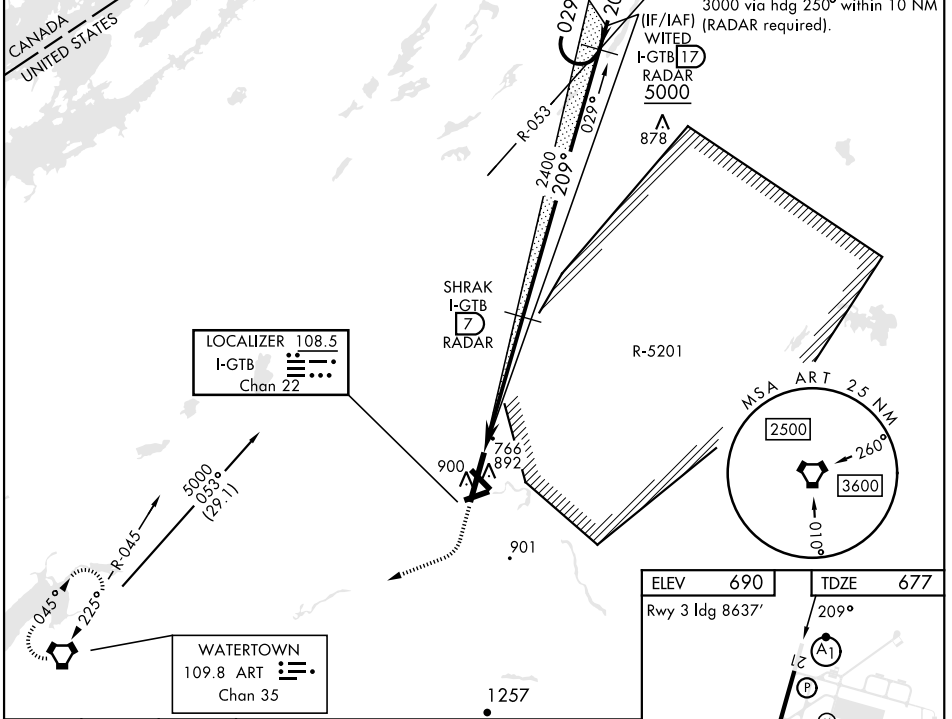
WHEELER-SACK AAF (KGTB)

DME or RADAR required		ALSIF-1 	MISSED APPROACH: Climb to 1200, then climbing right turn to 5000 direct ART VORTAC and hold. Continue climb-in-hold to 5000.
<p>▼ * When ALS inop, increase vis to 3/4 mile. ** When ALS inop, increase CAT ABC vis to 1 mile, CAT DE vis to 1 1/4 miles.</p>			

ATIS 119.525	APP CON 124.875 307.125	TOWER 118.75 290.25	GND CON 121.9 229.8	CLNC DEL 121.9	ASR/PAR
------------------------	-----------------------------------	-------------------------------	-------------------------------	--------------------------	---------

*** Circling NA E of Rwy 21 and 33.
Circling NA for CAT BCD to Rwy 8.
Circling NA for CAT E to Rwy 8-26 and 15-33.

ALTERNATE MISSED APPROACH:
When directed by ATC, climb to 1200, then climbing right turn to 3000 via hdg 250° within 10 NM (RADAR required).



CATEGORY	A	B	C	D	E
S-ILS 21 *		877- 1/2	200	(200- 1/2)	
S-LOC 21 **	1040- 1/2	363 (400- 1/2)	1040- 3/4	363 (400- 3/4)	
CIRCLING ***	1200-1 510 (600-1)	1220-1 1/2	530 (600-1 1/2)	1380-2 1/4 690 (700-2 1/4)	1640-3 950 (1000-3)

FAF to MAP 5.2 NM					
Knots	120	140	160	180	200
Min:Sec	2:36	2:14	1:57	1:44	1:34

FORT DRUM, NEW YORK
Amdt 3 20APR23

44° 03'N-75° 43'W

WHEELER-SACK AAF (KGTB)

ILS or LOC RWY 21

NE-2, 03 OCT 2024 to 31 OCT 2024

NE-2, 03 OCT 2024 to 31 OCT 2024