

FORT DRUM, NEW YORK

RNAV (GPS) RWY 15

APCH CRS 147°	Rwy Idg TDZE Arprt Elev	5002 687 690
-------------------------	-------------------------------	-----------------------------------------

AL-5754 (USA)

WHEELER SACK AAF (KGTB)

RNP APCH - GPS

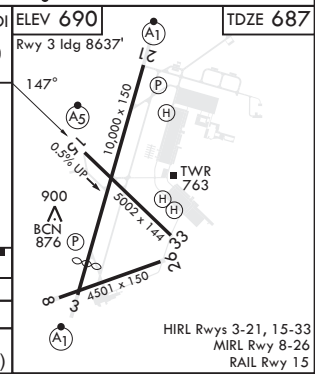
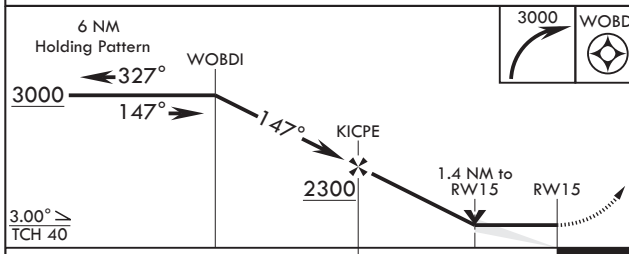
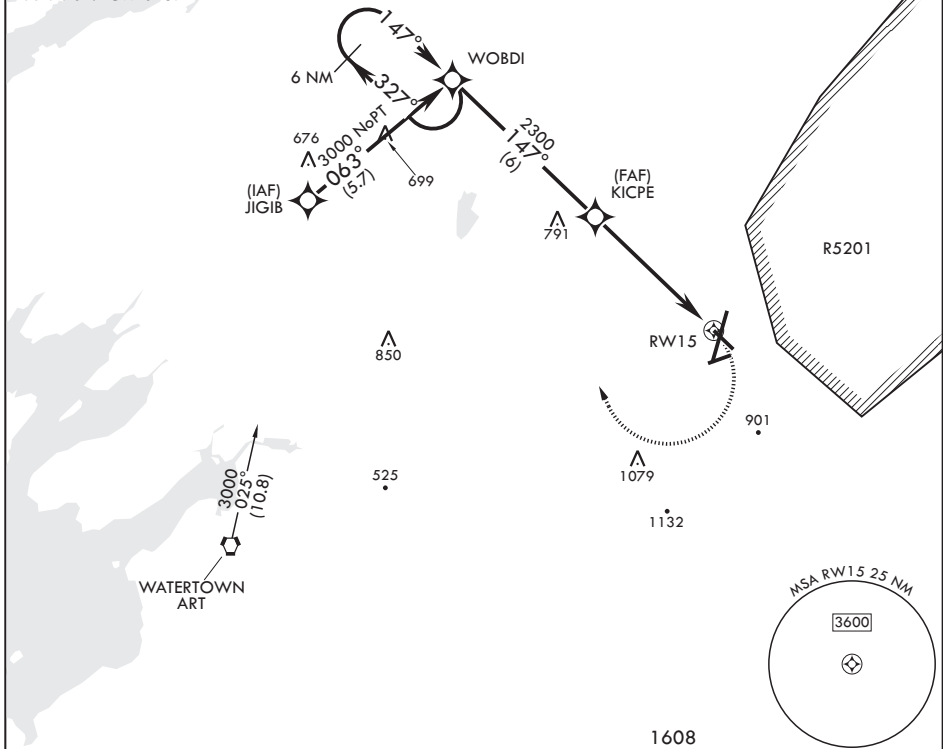
MALSR

MISSED APPROACH: Climbing right turn to 3000 direct WOBDI and hold.

* When ALS inop, increase CAT AB vis to 1 mile; CAT CD vis to 1 3/8 miles.
** Circling NA E of Rwy 21 and 33. Circling NA for CAT BCD to Rwy 8.

ATIS 119.525	APP CON/DEP CON 124.875 307.125	TOWER 118.75 290.25	GND CON 121.9 229.8	CLNC DEL 121.9	ASR/PAR
------------------------	-------------------------------------------	-------------------------------	-------------------------------	--------------------------	---------

Procedure NA for arrivals on ART VORTAC airway radials 017 CW 045.



CATEGORY	A	B	C	D
LNAV MDA*	1200-3/4 513 (600-3/4)	1200-1 513 (600-1)	1200-1 513 (600-1)	1200-1 513 (600-1)
Circling**	1200-1 510 (600-1)	1240-1 550 (600-1)	1280-1 590 (600-1 1/2)	1460-2 770 (800-2 1/2)

FORT DRUM, NEW YORK
Amdt 2 10AUG23

44°03'N - 75°43'W

WHEELER SACK AAF (KGTB)

RNAV (GPS) RWY 15

NE-2, 03 OCT 2024 to 31 OCT 2024

NE-2, 03 OCT 2024 to 31 OCT 2024