

FORT DRUM, NEW YORK

RNAV (GPS) RWY 21

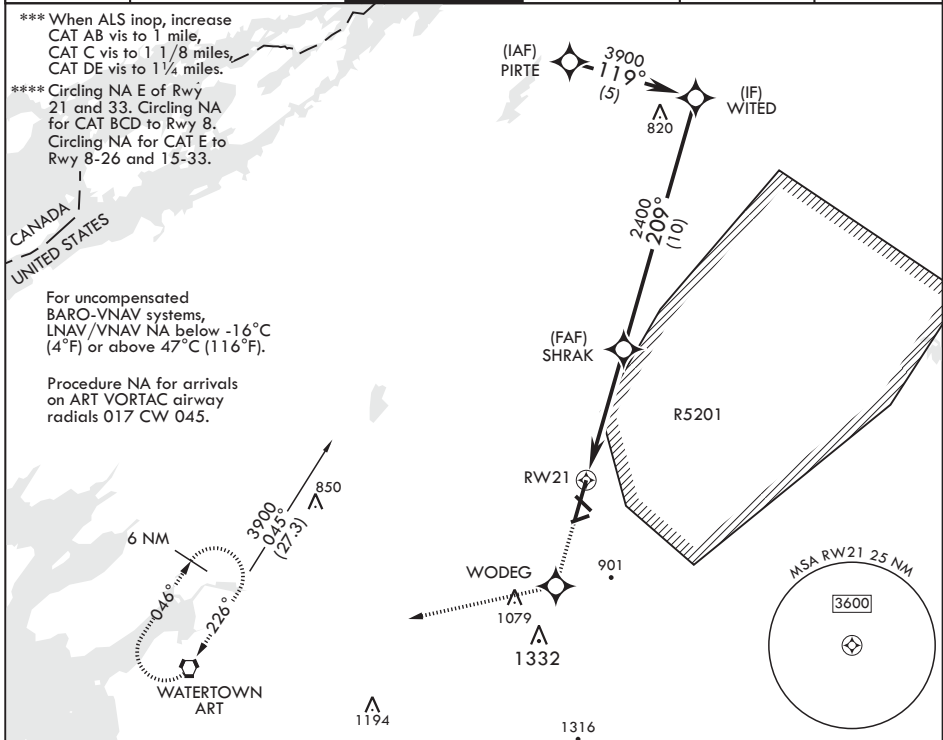
WAAS CH 63007 W21A	APCH CRS 209°	Rwy ldg TDZE Arpt Elev 10,000 677 690
---------------------------------	-------------------------	---

AL-5754 (USA)

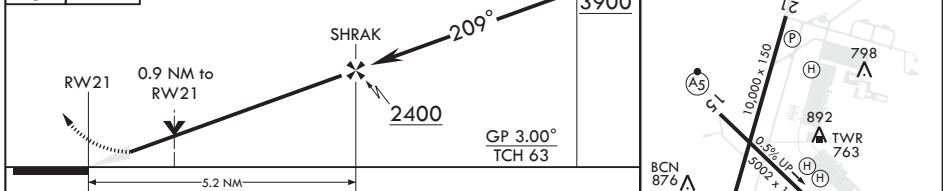
WHEELER SACK AAF (KGTB)

RNP APCH - GPS * When ALS inop, increase vis to 3/4 mile. ** When ALS inop, increase vis to 1 1/4 miles.	ALSF-1 	MISSED APPROACH: Climb to 3000 direct WODEG then right turn 270° track to ART VORTAC and hold.
--	------------	--

ATIS 119.525	APP CON/DEP CON 124.875 307.125	TOWER 118.75 290.25	GND CON 121.9 229.8	CLNC DEL 121.9	ASR/PAR
------------------------	---	-------------------------------	-------------------------------	--------------------------	---------



3000 	WODEG 	VGSI and RNAV glidepath not coincident.	WITED ELEV 690 Rwy 3 ldg 8637'	TDZE 677
----------	-----------	---	--------------------------------------	----------



CATEGORY	A	B	C	D	E
LPV DA*	877-1/2		200	(200-1/2)	
LNAV/VNAV DA**	1056-3/4		379	(400-3/4)	
LNAV MDA***	1080-1/2	403 (400-1/2)	1080-3/4	403	(400-3/4)
CIRCLING****	1200-1 510 (600-1)	1220-1 530 (600-1)	1220-1 1/2 530 (600-1 1/2)	1380-2 1/4 690 (700-2 1/4)	1640-3 950 (1000-3)

HIRL Rws 3-21, 15-33
MIRL Rwy 8-26
RAIL Rwy 15

FORT DRUM, NEW YORK

44°03'N - 75°43'W

WHEELER SACK AAF (KGTB)

Amdt 2 20APR23
TERPS

RNAV (GPS) RWY 21

NE-2, 03 OCT 2024 to 31 OCT 2024

NE-2, 03 OCT 2024 to 31 OCT 2024