

RNAV (GPS) RWY 33

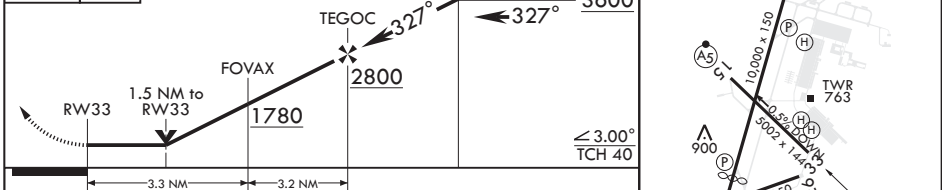
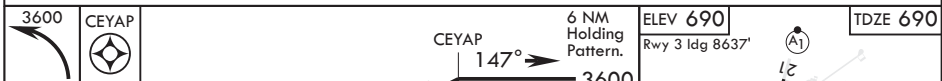
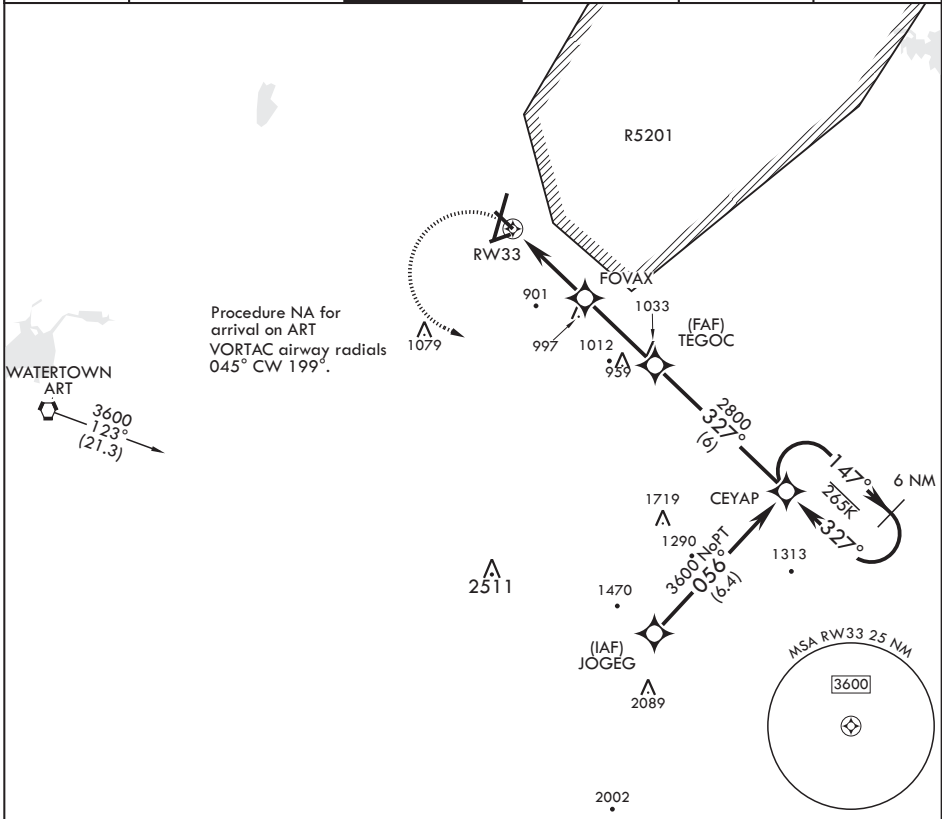
APCH CRS 327°	Rwy ldg TDZE Arprt Elev	5002 690 690
-------------------------	-------------------------------	---

AL-5754 (USA)

WHEELER SACK AAF (KGTB)

RNP APCH - GPS	MISSED APPROACH: Climbing left turn to 3600 direct CEYAP and hold.
* LNAV visibility reduction by helicopters NA. ** Circling NA for CAT BCD to Rwy 8. Circling NA E of Rwy 21 and 33.	

ATIS 119.525	APP CON/DEP CON 124.875 307.125	TOWER 118.75 290.25	GND CON 121.9 229.8	CLNC DEL 121.9	ASR/PAR
------------------------	---	-------------------------------	-------------------------------	--------------------------	---------



CATEGORY	A	B	C	D
LNAV MDA*	1200-1 510 (600-1)	1200-1 510 (600-1)	1200-1½ 510 (600-1½)	1460-2½ (800-2½)
Circling**	1200-1 510 (600-1)	1240-1 550 (600-1)	1280-1½ 590 (600-1½)	1460-2½ 770 (800-2½)

HIRL Rwy 3-21, 15-33
MIRL Rwy 8-26
RAIL Rwy 15

NE-2, 03 OCT 2024 to 31 OCT 2024

NE-2, 03 OCT 2024 to 31 OCT 2024