

APP CRS 236°	Rwy Idg 3000
	TDZE 1022
	Apt Elev 1031

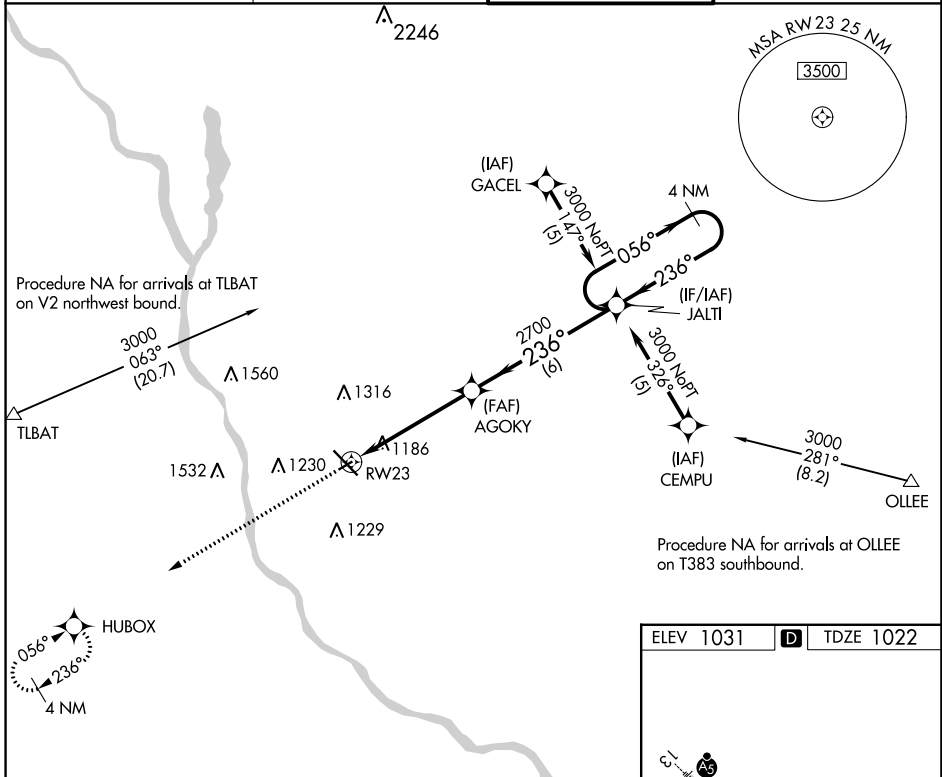
RNAV (GPS) RWY 23

ST CLOUD RGNL (STC)

⚠ Rwy 23 helicopter visibility reduction below 3/4 SM NA. DME/DME RNP-0.3 NA. VDP NA when using Little Falls altimeter setting. When local altimeter setting not received, use Little Falls altimeter setting and increase all MDA 80 feet and increase LNAV Cat C visibility 3/8 SM and Circling Cat C visibility 1/4 SM.

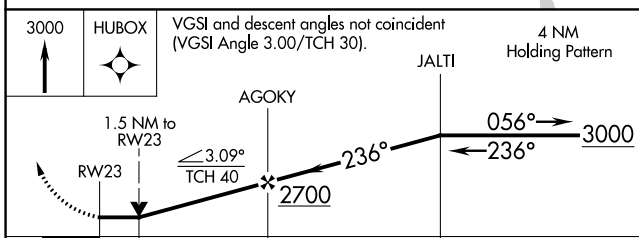
MISSED APPROACH: Climb to 3000 direct HUBOX and hold.

ATIS 119.375	MINNEAPOLIS CENTER 121.05 235.775	ST. CLOUD TOWER ★ 118.25 (CTAF) 0	GND CON 123.75
------------------------	---	---	--------------------------



NC-1, 03 OCT 2024 to 31 OCT 2024

NC-1, 03 OCT 2024 to 31 OCT 2024



ELEV 1031	D	TDZE 1022
-----------	---	-----------

MRL Rwy 5-23 0

HIRL Rwy 13-31 0

CATEGORY	A	B	C	D
LNAV MDA	1540-1	518 (600-1)	1540-1 3/8 518 (600-1 3/8)	NA
CIRCLING	1540-1	509 (600-1)	1620-1 1/2 589 (600-1 1/2)	NA