

APP CRS	Rwy Idg	3000
056°	TDZE	1022
	Apt Elev	1031

RNAV (GPS) RWY 5

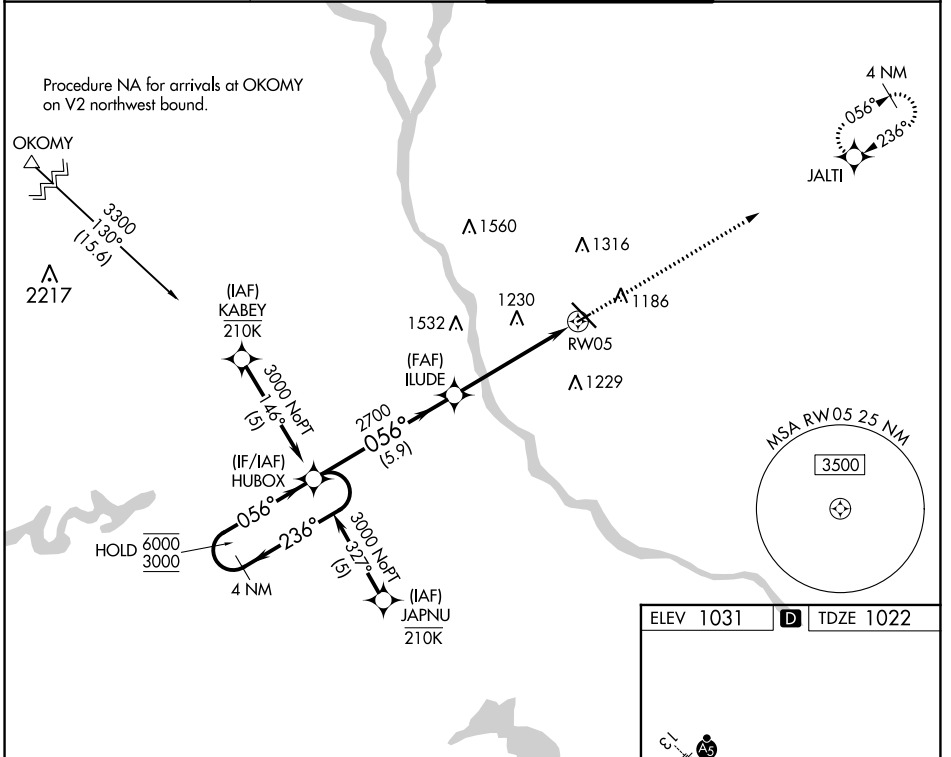
ST CLOUD RGNL (STC)

RNP APCH - GPS.

⚠ Rwy 5 helicopter visibility reduction below 3/4 SM NA. When local altimeter setting not received, use Little Falls altimeter setting, increase all MDAs 80 feet and LNAV visibility Cat C 1/4 SM. VDP NA when using Little Falls altimeter setting.

MISSED APPROACH: Climb to 3000 direct JALTI and hold.

ATIS 119.375	MINNEAPOLIS CENTER 121.05 235.775	ST. CLOUD TOWER * 118.25 (CTAF) 0	GND CON 123.75
------------------------	---------------------------------------------	---------------------------------------------	--------------------------



NC-1, 03 OCT 2024 to 31 OCT 2024

NC-1, 03 OCT 2024 to 31 OCT 2024

4 NM Holding Pattern		VGSI and descent angles not coincident (VGSI Angle 3.00/TCH 31).		3000	JALTI
6000	← 236°	→ 056°	ILUDE	2700	1.4 NM to RWY 05
3000			3.00° TCH 40		
		5.9 NM	3.8 NM	1.4 NM	
CATEGORY	A	B	C	D	
LNAV MDA	1500-1	478 (500-1)	1500-1 3/8 478 (500-1 3/8)	NA	
CIRCLING	1500-1	469 (500-1)	1620-1 1/2 589 (600-1 1/2)	NA	

