

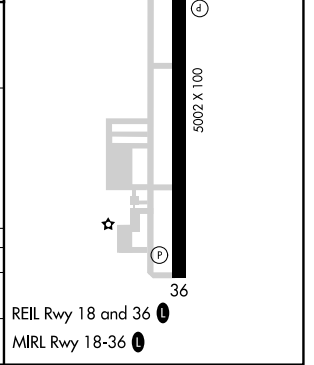
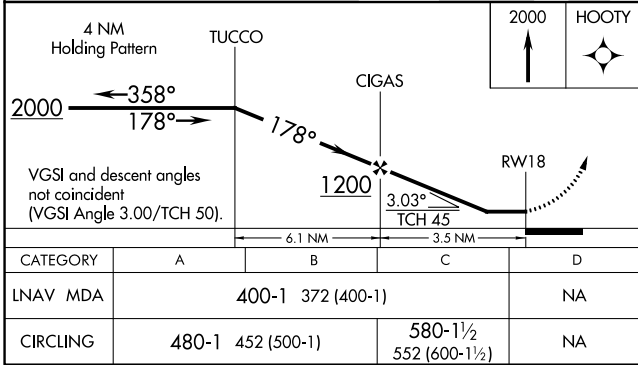
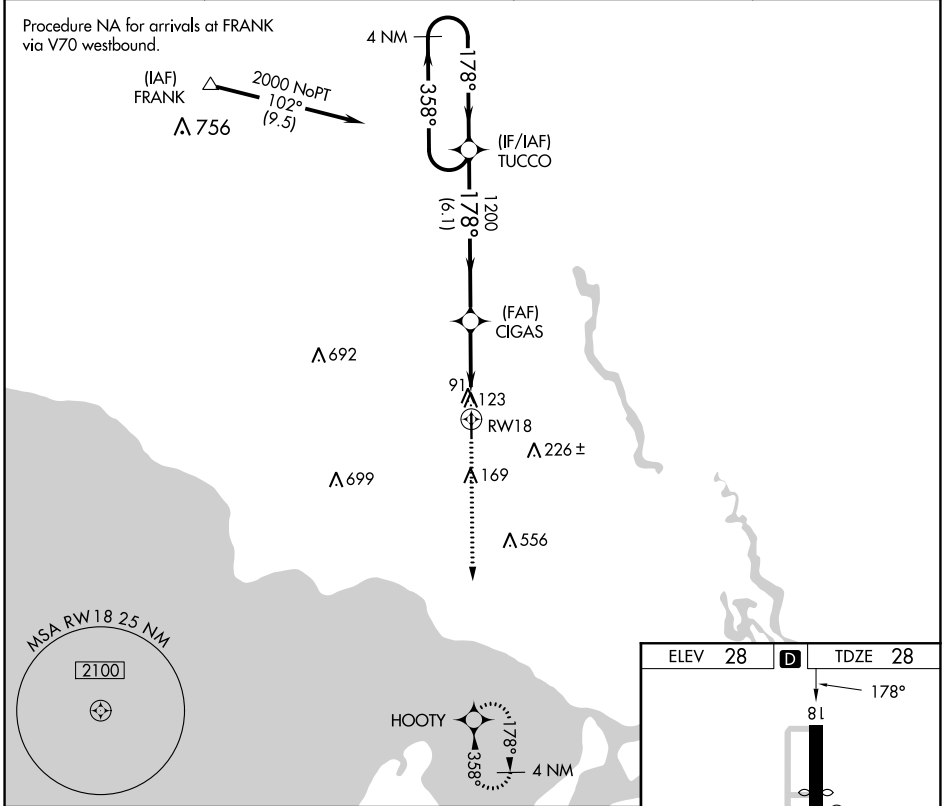
APP CRS	Rwy Idg	<b>4058</b>
<b>178°</b>	TDZE	<b>28</b>
	Apt Elev	<b>28</b>

# RNAV (GPS) RWY 18

SLIDELL (ASD)

RNP APCH.		MISSED APPROACH: Climb to 2000 direct HOOTY and hold.
NA Helicopter visibility reduction below 1 SM NA.		

ASOS <b>132.475</b>	NEW ORLEANS APP CON <b>133.15 290.3</b>	UNICOM <b>122.8 (CTAF) 0</b>	GCO <b>135.075</b>
------------------------	--	---------------------------------	-----------------------



SC-4, 03 OCT 2024 to 31 OCT 2024

SC-4, 03 OCT 2024 to 31 OCT 2024