

LOC/DME I-RVT 111.15 Chan 48(Y)	APP CRS 002°	Rwy Idg 8003 TDZE 261 Apt Elev 264
---	------------------------	---

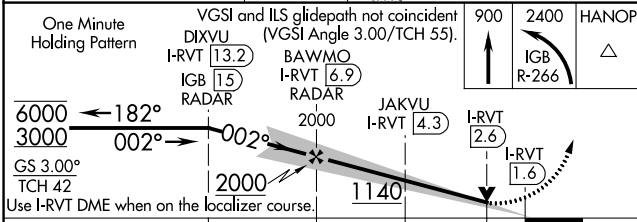
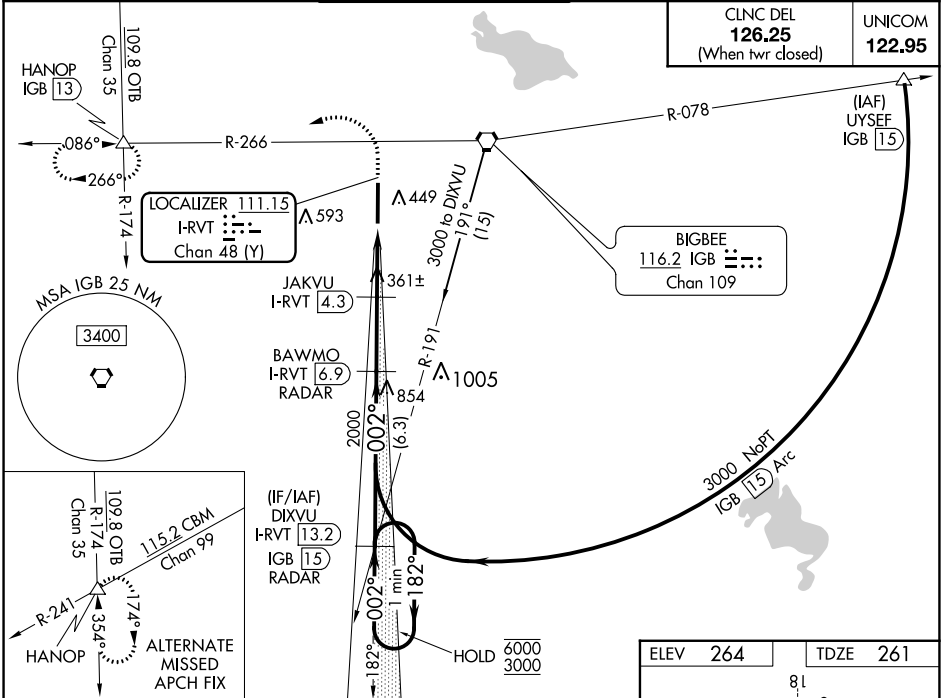
ILS or LOC RWY 36

GOLDEN TRIANGLE RGNL (GTR)

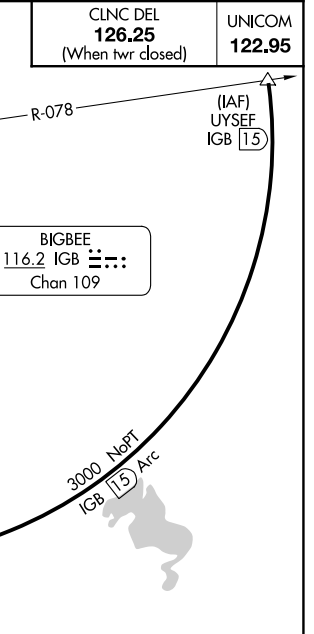
DME or RADAR required.

▲ MISSED APPROACH: Climb to 900 then climbing left turn to 2400 on IGB VORTAC R-266 to HANOP INT/IGB VORTAC 13 DME and hold.

ATIS 126.375	COLUMBUS APP CON* 135.6 323.275	GOLDEN TRIANGLE TOWER* 118.2 (CTAF) 0 298.875	GND CON 135.375 322.475	CLNC DEL 135.375 322.475
------------------------	---	---	-----------------------------------	------------------------------------



One Minute Holding Pattern	VGSI and ILS glidepath not coincident (VGSI Angle 3.00°/TCH 55%).				900	2400	HANOP
	I-RVT 13.2	BAWMO I-RVT 6.9	JAKVU I-RVT 4.3	I-RVT 2.6	IGB R-266		
	IGB 15 RADAR	RADAR		I-RVT 1.6			
	6.3 NM	2.7 NM	1.7 NM				
CATEGORY	A	C	D	E			
S-ILS 36	461-3/4 200 (200-3/4)						
S-LOC 36	1140-1 1/4	879 (900-1 1/4)	1140-2 1/2	879 (900-2 1/2)			
C CIRCLING	1140-1 1/4	876 (900-1 1/4)	1140-2 1/2	1140-2 3/4	1140-3		
			876 (900-2 1/2)	876 (900-2 3/4)	876 (900-3)		
JAKVU FIX MINIMUMS							
S-LOC 36	620-1 359 (400-1)						
C CIRCLING	760-1	496 (500-1)	960-2	960-2 1/4	960-2 1/2		
			696 (700-2)	696 (700-2 1/4)	696 (700-2 1/2)		



ELEV 264	TDZE 261
81	
TWR 346	
8003 X 150	
36	
002°	
HIRL Rwy 18-36	
FAF to MAP 5.4 NM	
Knots	60 90 120 150 180
Min:Sec	5:24 3:36 2:42 2:10 1:48

SC-4, 03 OCT 2024 to 31 OCT 2024

SC-4, 03 OCT 2024 to 31 OCT 2024