

WAAS CH 63203 W18A	APP CRS 182°	Rwy Idg TDZE Apt Elev	8003 264 264
--	------------------------	-----------------------------	---

RNAV (GPS) RWY 18

GOLDEN TRIANGLE RGNL (GTR)

RNP APCH - GPS.

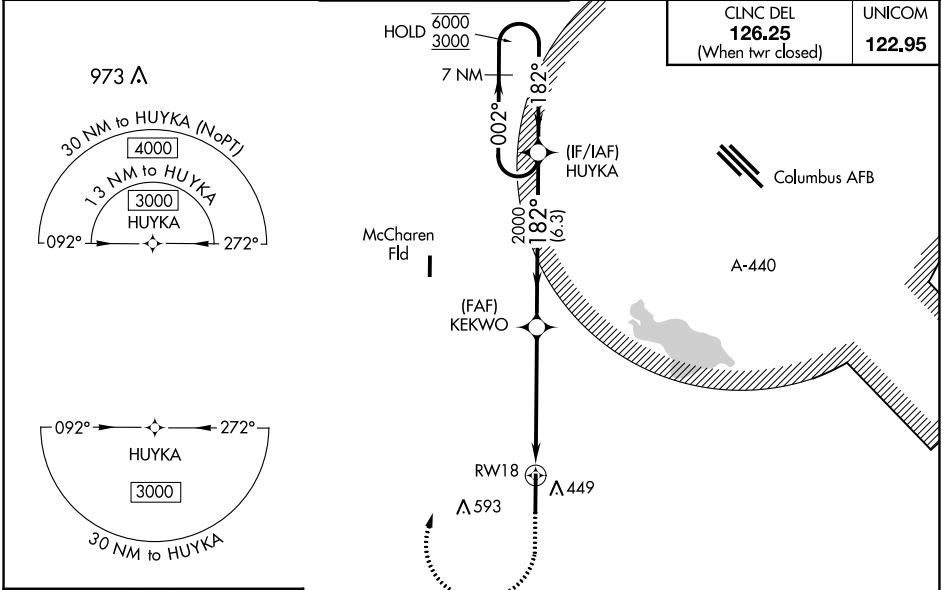
⚠ For uncompensated Baro-VNAV systems, LNAV/VNAV NA below -15°C or above 54°C. For inop ALS, increase LPV Cat E visibility to 3/4 SM, LNAV/VNAV Cat E to 1 3/8 SM, and LNAV Cat C/D/E to 1 1/8 SM.



MISSED APPROACH:
Climb to 800 then climbing right turn to 3000 direct HUYKA and hold, continue climb-in-hold to 3000.

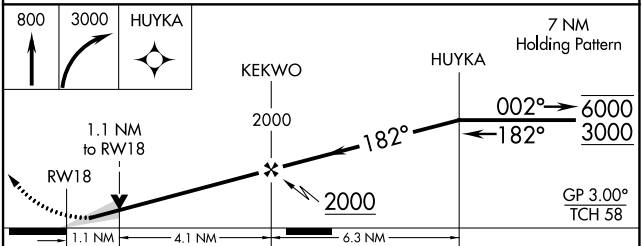
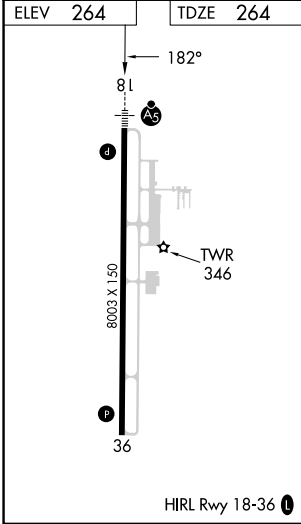
ATIS 126.375	COLUMBUS APP CON* 135.6 323.275	GOLDEN TRIANGLE TOWER* 118.2 (CTAF) 0 298.875	GND CON 135.375 322.475	CLNC DEL 135.375 322.475
------------------------	---	---	-----------------------------------	------------------------------------

CLNC DEL 126.25 (When twr closed)	UNICOM 122.95
--	-------------------------



SC-4, 03 OCT 2024 to 31 OCT 2024

SC-4, 03 OCT 2024 to 31 OCT 2024



CATEGORY	A	B	C	D	E
LPV DA		464-1/2	200 (200-1/2)		
LNAV/VNAV DA		710-7/8	446 (500-7/8)		
LNAV MDA	680-1/2	416 (500-1/2)	680-3/4	416 (500-3/4)	
C CIRCLING	760-1	496 (500-1)	960-2 696 (700-2)	960-2 1/4 696 (700-2 1/4)	960-2 1/2 696 (700-2 1/2)