

APP CRS	Rwy Idg	3000
180°	TDZE	137
	Apt Elev	137

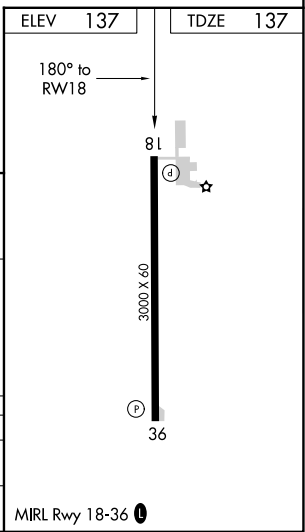
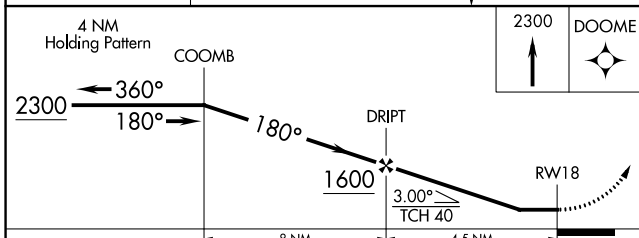
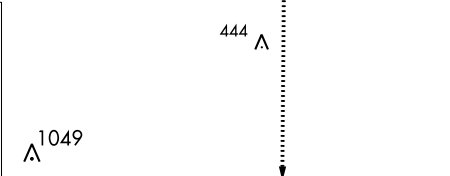
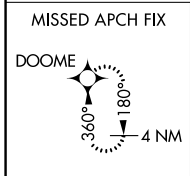
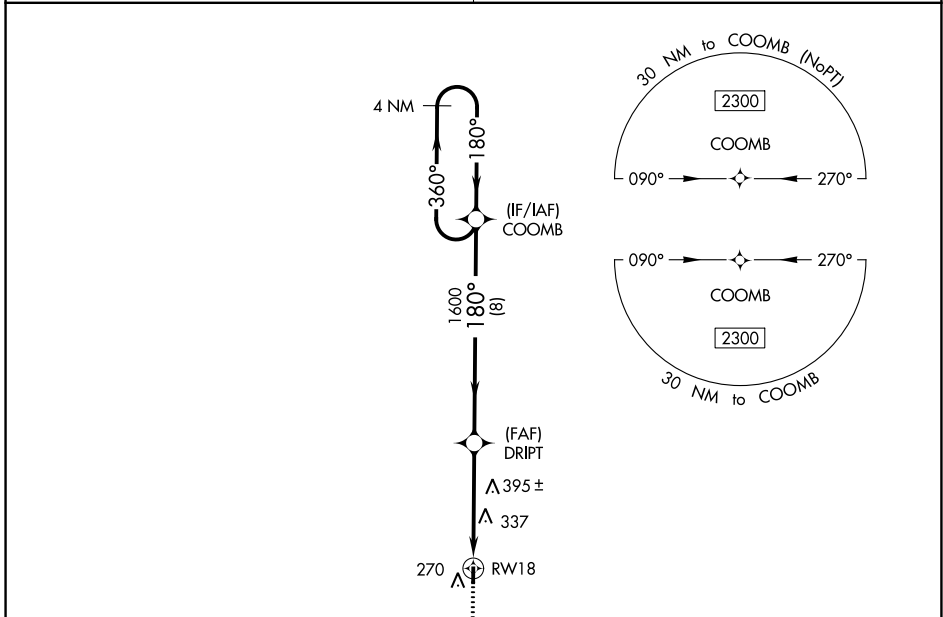
RNAV (GPS) RWY 18

RULEVILLE-DREW (M37)

▽ DME/DME RNP-0.3 NA. Use Cleveland altimeter setting; when not received, use Greenwood altimeter setting and increase all MDA 40 feet and increase LNAV and Circling Cat C visibility ¼ mile. Procedure NA at night. Helicopter visibility reduction below 1 SM NA.

△ NA MISSED APPROACH: Climb to 2300 direct DOOME and hold.

MEMPHIS CENTER 135.875 269.35	CTAF 122.9
---	----------------------



CATEGORY	A	B	C	D
LNAV MDA	680-1 543 (600-1)	543 (600-1)	680-1 3/8 543 (600-1 3/8)	NA
C CIRCLING	680-1 543 (600-1)	720-1 583 (600-1)	780-1 3/4 643 (700-1 3/4)	NA

SC-4, 03 OCT 2024 to 31 OCT 2024

SC-4, 03 OCT 2024 to 31 OCT 2024