

WAAS CH 48832 W36A	APP CRS 356°	Rwy Idg TDZE 425 Apt Elev 425	6500
--	------------------------	---	-------------

RNAV (GPS) RWY 36

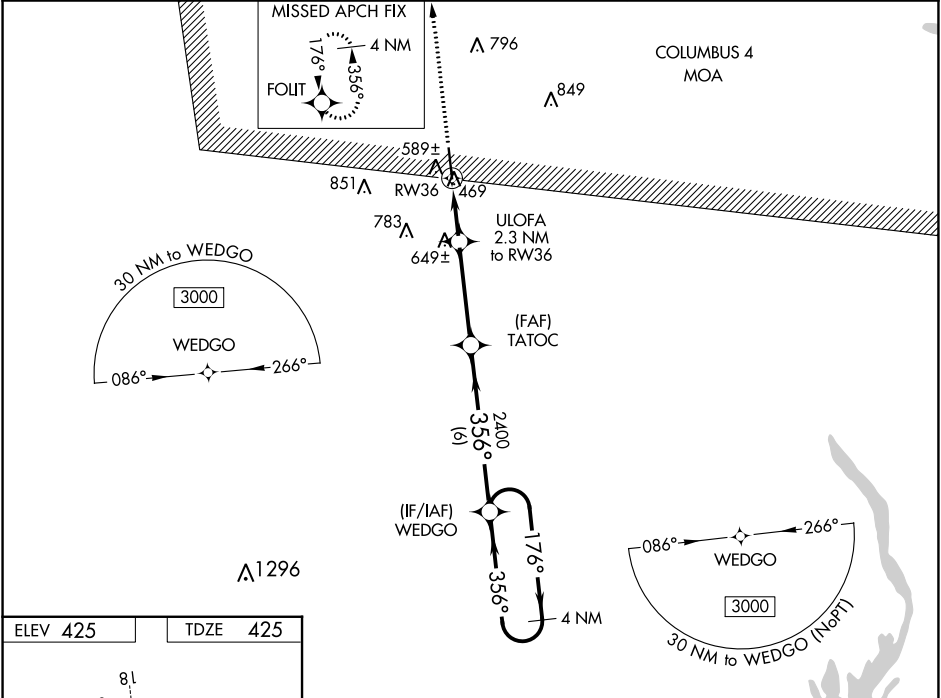
ROSCOE TURNER (CRX)

RNP APCH-GPS

▼ For uncompensated Baro-VNAV systems, LNAV/VNAV NA below -15°C or above 54°C. When local altimeter setting not received, use Selmer altimeter setting and increase LPV DA to 764 feet and all visibilities ½ SM. Increase LNAV/VNAV DA to 818 feet and all visibilities ½ SM. Increase all MDAs 80 feet and LNAV visibility Cats C and D ¼ SM, and Circling visibility Cats C and D ½ SM. Baro-VNAV and VDP NA when using Selmer altimeter setting. Rwy 36 helicopter visibility reduction below ¾ SM NA.

MISSED APPROACH:
Climb to 3000 direct FOLIT and hold.

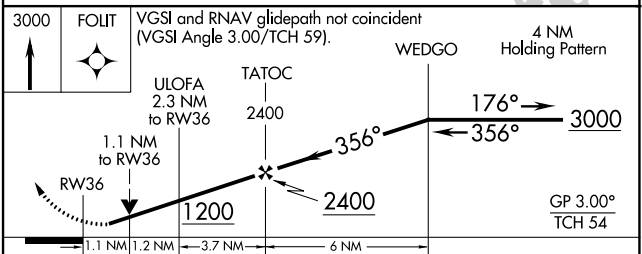
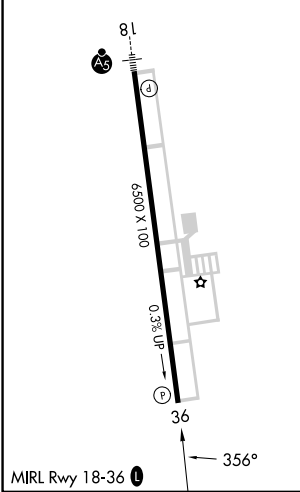
AWOS-3PT 118.675	MEMPHIS CENTER 135.9 273.55	UNICOM 122.8 (CTAF)
----------------------------	---------------------------------------	-------------------------------



SC-4, 03 OCT 2024 to 31 OCT 2024

SC-4, 03 OCT 2024 to 31 OCT 2024

ELEV 425	TDZE 425
-----------------	-----------------



CATEGORY	A	B	C	D
LPV DA		696-7/8	271 (300-7/8)	
LNAV/VNAV DA		750-1	325 (400-1)	
LNAV MDA	840-1	415 (500-1)	840-1½	415 (500-1½)
C CIRCLING	920-1	495 (500-1)	1100-2 675 (700-2)	1160-2¼ 735 (600-2¼)