

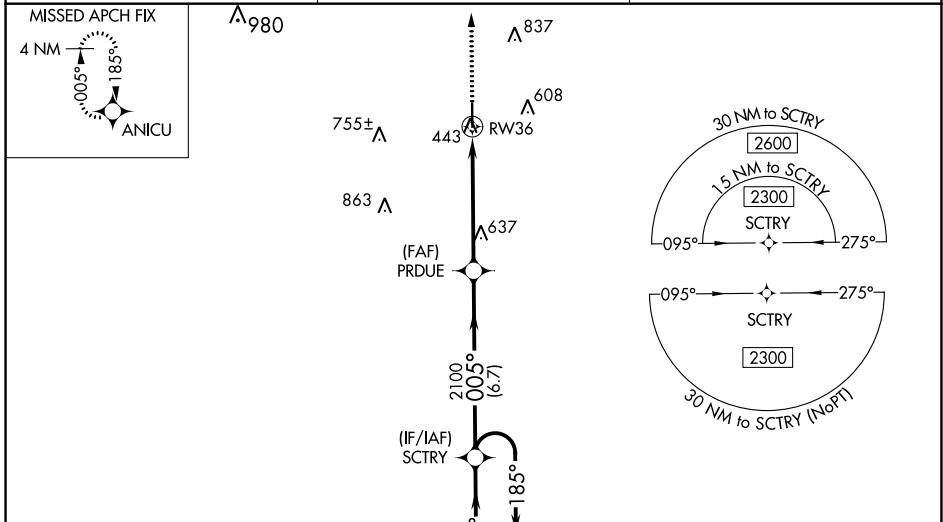
WAAS CH 86805 W36A	APP CRS 005°	Rwy ldg TDZE Apt Elev	5004 417 418
--	------------------------	-----------------------------	---

RNAV (GPS) RWY 36

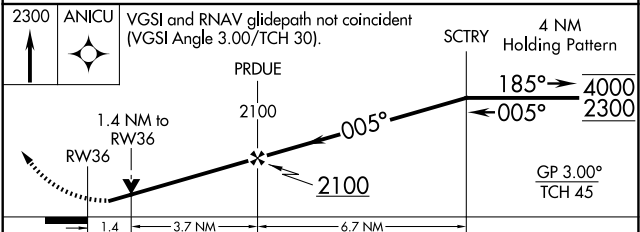
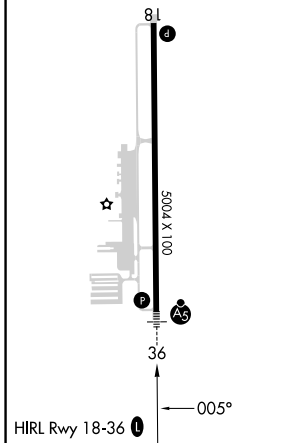
PERRY-HOUSTON COUNTY (PXE)

RNP APCH-GPS.	MALSRS 	MISSED APPROACH: Climb to 2300 direct ANICU and hold.
---------------	------------	--

AWOS-3 123.825	ATLANTA APP CON ★ 124.2 279.6	UNICOM 122.725 (CTAF) 0
--------------------------	---	-----------------------------------



ELEV 418	TDZE 417
-----------------	-----------------



CATEGORY	A	B	C	D
LPV DA		667-3/4	250 (300-3/4)	
LNAV/VNAV DA		667-3/4	250 (300-3/4)	
LNAV MDA	900-3/4	483 (500-3/4)	900-1	483 (500-1)
C CIRCLING	900-1	482 (500-1)	1140-2 722 (800-2)	1280-2 3/4 862 (900-2 3/4)