

(SAYBR3.SAYBR) 21112

AL-5891 (FAA)

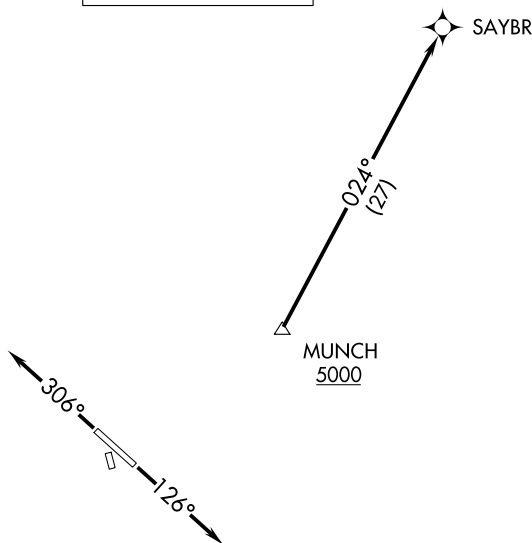
AUSTIN EXEC(EDC)

# SAYBR THREE DEPARTURE (RNAV)

AUSTIN, TEXAS

AWOS-3  
 118.825  
 CLNC DEL  
 126.025 (When twr closed)  
 EXECUTIVE TOWER★  
 120.3 (CTAF)  
 UNICOM  
 122.975  
 AUSTIN DEP CON  
 127.225 317.65

**TOP ALTITUDE:  
 ASSIGNED BY ATC**



- NOTE: RADAR required.
- NOTE: DME/DME/IRU or GPS required.
- NOTE: RNAV 1.
- NOTE: For DFW terminal area arrivals at FL230 or below only.

### TAKEOFF MINIMUMS

Rwys 16, 34: NA-Environmental.

Rwys 13, 31: Standard.

NOTE: Chart not to scale.



### DEPARTURE ROUTE DESCRIPTION

TAKEOFF RUNWAY 13: Climb on heading 126° or as assigned by ATC for vectors to cross MUNCH at or above 5000, thence. . . .

TAKEOFF RUNWAY 31: Climb on heading 306° or as assigned by ATC for vectors to cross MUNCH at or above 5000, thence. . . .

. . . . on track 024° to SAYBR. Maintain altitude assigned by ATC.  
Expect filed altitude 10 minutes after departure.

# SAYBR THREE DEPARTURE (RNAV)

(SAYBR3.SAYBR) 22APR21

AUSTIN, TEXAS

AUSTIN EXEC(EDC)

SC-3, 03 OCT 2024 to 31 OCT 2024

SC-3, 03 OCT 2024 to 31 OCT 2024