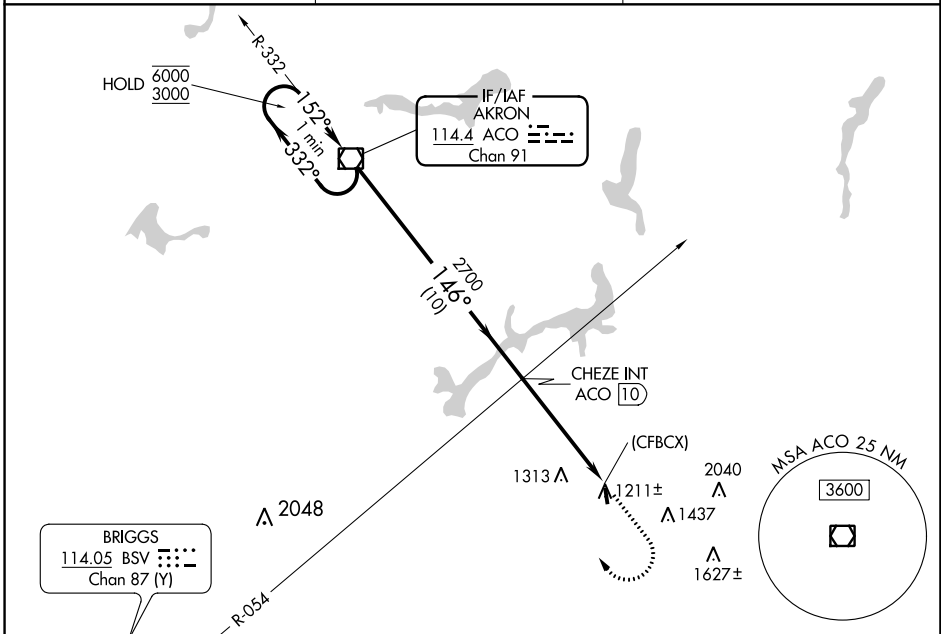


VOR/DME ACO	APP CRS	Rwy Idg	2768
<b>114.4</b>	<b>146°</b>	TDZE	<b>1188</b>
Chan 91		Apt Elev	<b>1188</b>

# VOR RWY 18

TRI-CITY (3G6)

<p><b>▽</b> Procedure NA at night. Rwy 18 helicopter visibility reduction below 1 SM NA. Use Akron-Canton Rgnl altimeter setting, when not received, use Ravenna altimeter setting.</p> <p><b>△</b> NA</p>	<p>MISSED APPROACH: Climb to 3000 then climbing right turn to 3100 direct ACO VOR/DME and hold.</p>	
<p>CAK ASOS</p> <p><b>121.05</b></p>	<p>CLEVELAND APP CON *</p> <p><b>125.5 371.875</b></p>	<p>CTAF</p> <p><b>122.9 0</b></p>



ELEV	1188	TDZE	1188
<p>LIRL Rwy 18-36 0</p> <p>FAF to MAP 4.8 NM</p>			
Knots	60	90	120 150 180
Min:Sec	4:48	3:12	2:24 1:55 1:36

CATEGORY	A	B	C	D
S-18	1680-1	492 (500-1)		NA
<b>C</b> CIRCLING	1680-1 492 (500-1)	1800-1 612 (700-1)		NA

EC-2, 03 OCT 2024 to 31 OCT 2024

EC-2, 03 OCT 2024 to 31 OCT 2024