

|  |                        |   |
|--|------------------------|---|
| WAAS<br>CH <b>86823</b><br><b>W36A</b> | APP CRS<br><b>358°</b> | Rwy Idg <b>5005</b><br>TDZE <b>140</b><br>Apt Elev <b>140</b> |
|--|------------------------|---|

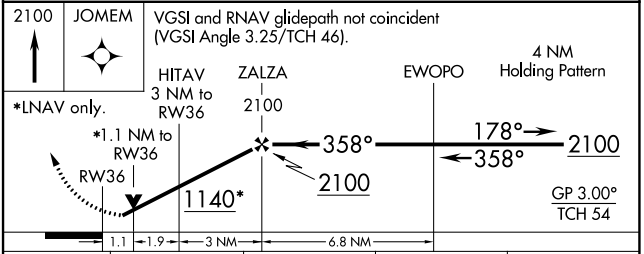
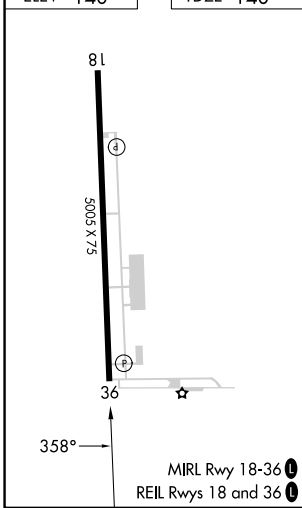
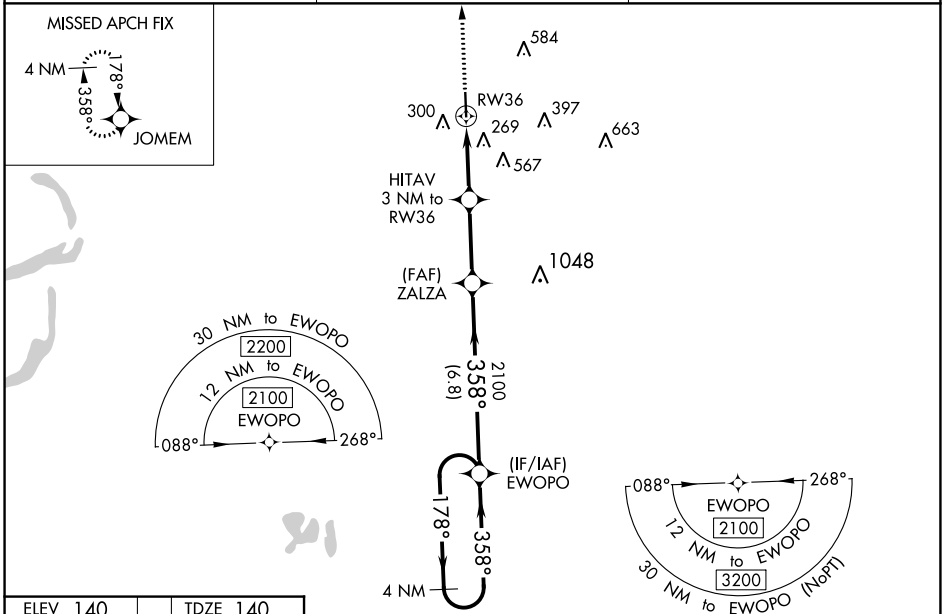
# RNAV (GPS) RWY 36

CLEVELAND MUNI (RNV)

**⚠** For uncompensated Baro-VNAV systems, LNAV/VNAV NA below -1.5°C (5°F) or above 54°C (130°F). DME/DME RNP-0.3 NA. Baro-VNAV and VDP NA when using Greenville altimeter setting. When local altimeter setting not received, use Greenville altimeter setting and increase LPV DA to 438, LNAV/VNAV DA to 597, and all MDA 60 feet; increase LPV all Cats and LNAV Cats C/D visibility ¼ mile, and LNAV/VNAV all Cats visibility ½ mile. Rwy 36 helicopter visibility reduction below ¾ SM NA.

**⚠** MISSED APPROACH: Climb to 2100 direct JOMEM and hold.

|                            |   |                                   |
|----------------------------|---|-----------------------------------|
| AWOS-3PT<br><b>124.175</b> | MEMPHIS CENTER<br><b>135.875 269.35</b> | UNICOM<br><b>122.725 (CTAF) 0</b> |
|----------------------------|---|-----------------------------------|



| CATEGORY          | A     | B           | C                      | D                      |
|-------------------|-------|-------------|------------------------|------------------------|
| LPV DA            |       | 390-¾       | 250 (300-¾)            |                        |
| LNAV/VNAV DA      |       | 549-1¾      | 409 (500-1¾)           |                        |
| LNAV MDA          |       | 520-1       | 380 (400-1)            |                        |
| <b>C</b> CIRCLING | 600-1 | 460 (500-1) | 900-2¼<br>760 (800-2¼) | 900-2½<br>760 (800-2½) |

SC-4, 03 OCT 2024 to 31 OCT 2024

SC-4, 03 OCT 2024 to 31 OCT 2024