

WAAS CH <b>70536</b> <b>W25A</b>	APP CRS <b>255°</b>	Rwy Idg TDZE Apt Elev	<b>4001</b> <b>1065</b> <b>1067</b>
--	------------------------	-----------------------------	---

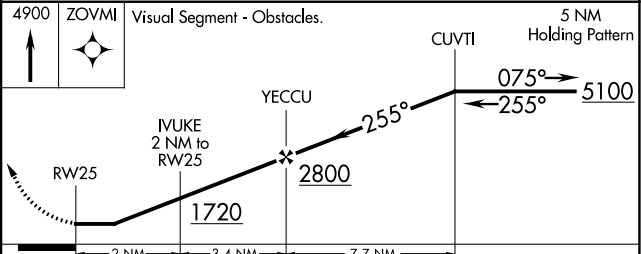
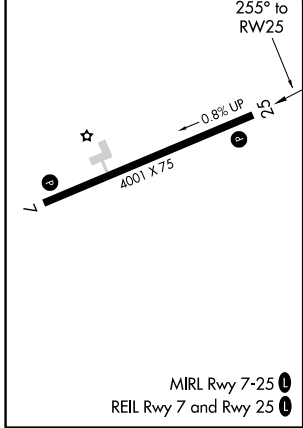
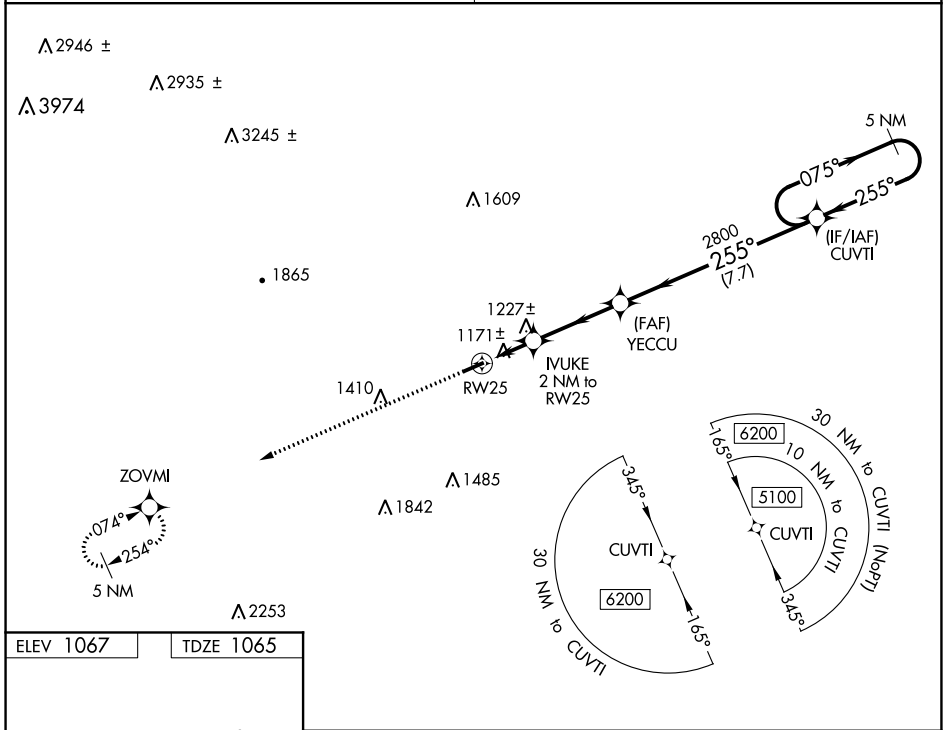
# RNAV (GPS) RWY 25

ELKIN MUNI (ZEF)

**▼** Obtain local altimeter setting on CTAF; when not received, use Mount Airy altimeter setting and increase MDA 80 ft and LP and Circling Cats C/D  
**▲ NA** visibility ¼ mile. DME/DME RNP-0.3 NA. Procedure NA at night. Helicopter visibility reduction below 1 SM NA.

**MISSED APPROACH:** Climb to 4900 direct ZOVMI and hold, continue climb-in-hold to 4900.

ATLANTA CENTER <b>125.15 263.0</b>	UNICOM <b>123.05 (CTAF) 0</b>
---------------------------------------	----------------------------------



CATEGORY	A	B	C	D
LP MDA	1440-1	375 (400-1)	1440-1 $\frac{1}{8}$	375 (400-1 $\frac{1}{8}$ )
LNAV MDA	1480-1	415 (500-1)	1480-1 $\frac{3}{8}$	415 (500-1 $\frac{3}{8}$ )
<b>C</b> CIRCLING	1540-1 473 (500-1)	1600-1 533 (600-1)	1680-1 $\frac{3}{4}$ 613 (700-1 $\frac{3}{4}$ )	1840-2 $\frac{1}{2}$ 773 (800-2 $\frac{1}{2}$ )

SE-2, 03 OCT 2024 to 31 OCT 2024

SE-2, 03 OCT 2024 to 31 OCT 2024