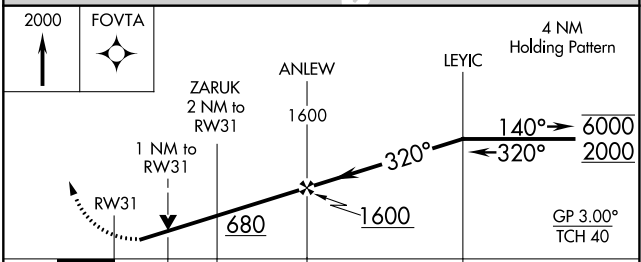
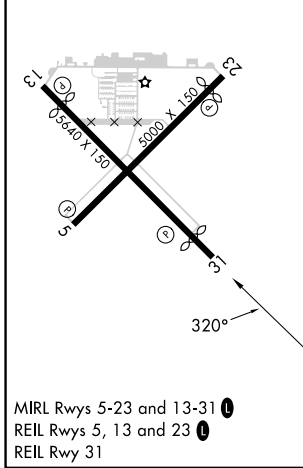
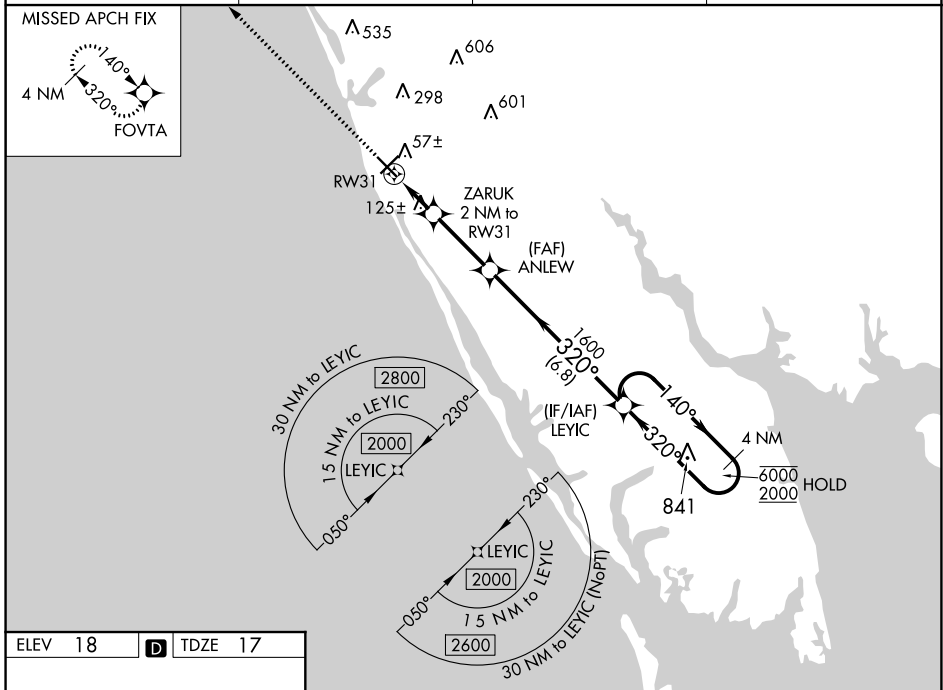


WAAS CH <b>78223</b> <b>W31A</b>	APP CRS <b>320°</b>	Rwy Idg <b>5000</b> TDZE <b>17</b> Apt Elev <b>18</b>
--	------------------------	---

# RNAV (GPS) RWY 31

VENICE MUNI (VNC)

RNP APCH - GPS.		MISSED APPROACH: Climb to 2000 direct FOVTA and hold.	
Rwy 31 helicopter visibility reduction below 3/4 SM NA. For uncompensated Baro-VNAV systems, LNAV/VNAV NA below -15°C or above 54°C.			
AWOS-3 <b>119.275</b>	TAMPA APP CON <b>119.65 353.575</b>	CLNC DEL <b>118.075</b>	UNICOM <b>122.725 (CTAF) 1</b>



CATEGORY	A	B	C	D
LPV DA		267-1	250 (300-1)	
LNAV/VNAV DA		296-1	279 (300-1)	
LNAV MDA		380-1	363 (400-1)	
CIRCLING	500-1	482 (500-1)	680-1 3/4 662 (700-1 3/4)	920-3 902 (1000-3)

SE-3, 03 OCT 2024 to 31 OCT 2024

SE-3, 03 OCT 2024 to 31 OCT 2024