

NDB FWC <b>257</b>	APP CRS <b>085°</b>	Rwy Idg TDZE Apt Elev	<b>4000</b> <b>434</b> <b>434</b>
-----------------------	------------------------	-----------------------------	---

# NDB RWY 9

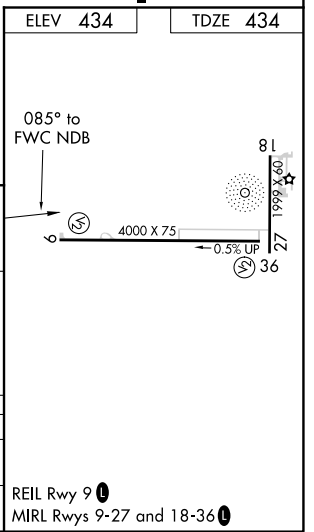
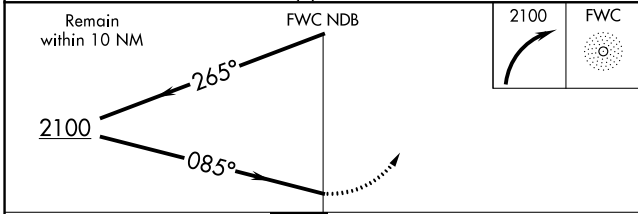
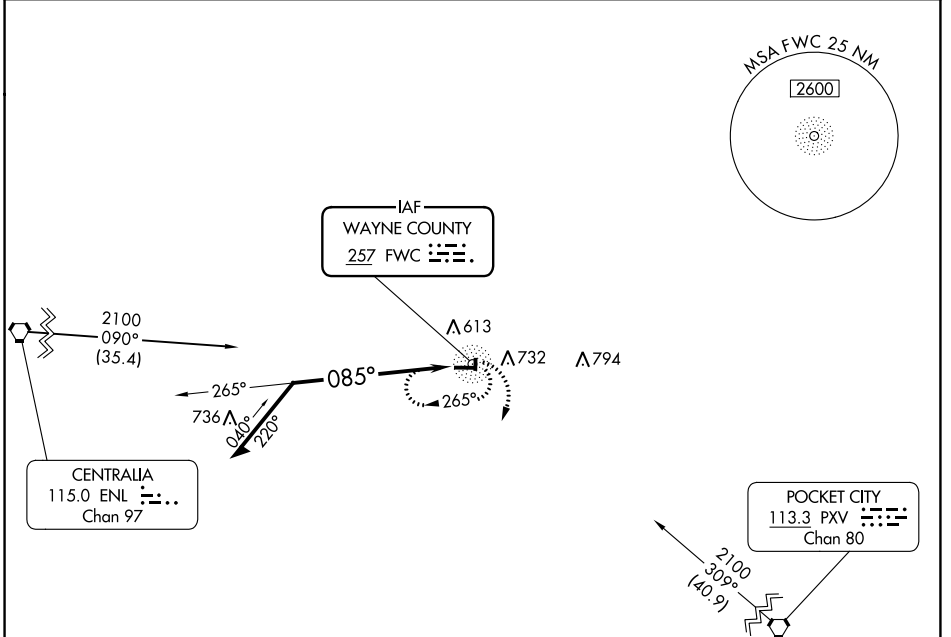
FAIRFIELD MUNI (FWC)

ADF required.

**⚠** Rwy 9 helicopter visibility reduction below 1 SM NA.  
**⚠** Straight-in Rwy 9 NA at night, Circling Rwy 9, 27, 36 NA at night.

MISSED APPROACH: Climbing right turn to 2100 in FWC NDB holding pattern.

AWOS-3PT <b>119.425</b>	KANSAS CITY CENTER <b>127.7 351.825</b>	UNICOM <b>123.05 (CTAF)</b>
----------------------------	--	--------------------------------



EC-3, 03 OCT 2024 to 31 OCT 2024

EC-3, 03 OCT 2024 to 31 OCT 2024