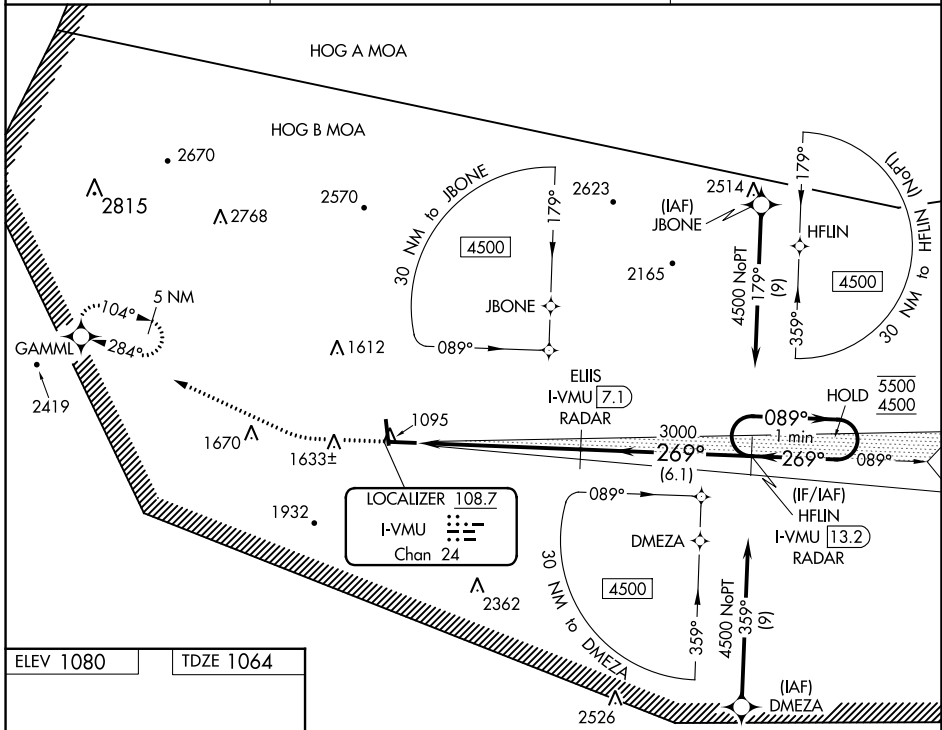


LOC/DME I-VMU 108.7 Chan 24	APP CRS 269°	Rwy Idg 5485 TDZE 1064 Apt Elev 1080
---	------------------------	---

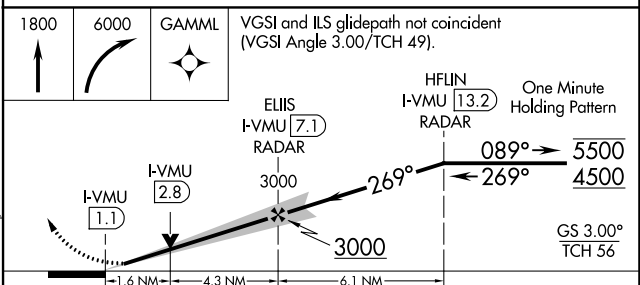
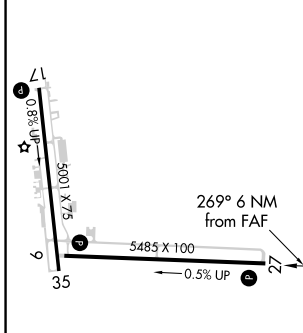
ILS or LOC RWY 27

MENA INTERMOUNTAIN MUNI (MEZ)

DME or RADAR required. RNP APCH - GPS.		MISSED APPROACH: Climb to 1800 then climbing right turn to 6000 direct GAMML and hold, continue climb-in-hold to 6000.
Circling Rwy 35 NA at night.		
AWOS-3 118.025	MEMPHIS CENTER 126.1 269.0	UNICOM 122.8 (CTAF) 0



ELEV 1080	TDZE 1064
-----------	-----------



CATEGORY	A	B	C	D
S-ILS 27	1502-1¼ 438 (500-1¼)			NA
S-LOC 27	1620-1	556 (600-1)	1620-1⅝ 556 (600-1⅝)	NA
<input checked="" type="checkbox"/> CIRCLING	1840-1 760 (800-1)	2140-1½ 1060 (1100-1½)	2220-3 1140 (1200-3)	NA

SC-1, 03 OCT 2024 to 31 OCT 2024

SC-1, 03 OCT 2024 to 31 OCT 2024