

APP CRS 179°	Rwy Idg 5000
	TDZE 1316
	Apt Elev 1321

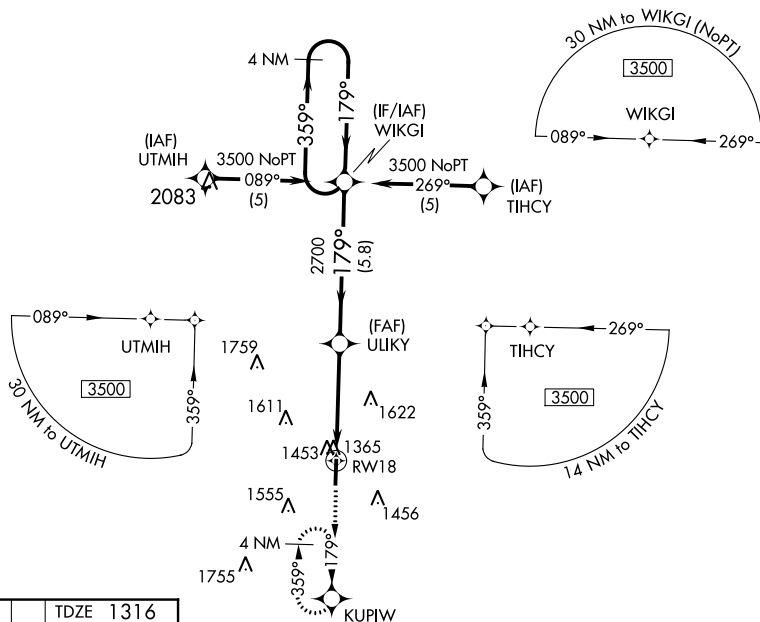
RNAV (GPS) RWY 18

FLOYD W JONES LEBANON (LBO)

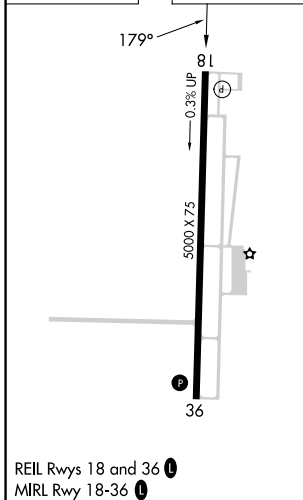
When local altimeter setting not received, use Springfield-Branson Ntl altimeter setting: increase LNAV/VNAV DA to 2043 feet; increase all MDAs 120 feet and Circling visibility Cat C/D ½ SM. Baro-VNAV NA when using Springfield-Branson Ntl altimeter setting. Baro-VNAV NA below -17° C (1° F). DME/DME RNP-0.3 NA.

MISSED APPROACH: Climb to 3500 direct KUPIW and hold.

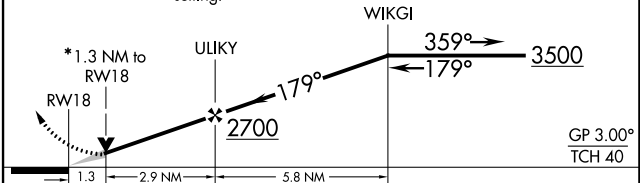
AWOS-3PT 118.975	SPRINGFIELD APP CON 121.1 290.5	CLNC DEL 123.725	UNICOM 122.8 (CTAF) 0
----------------------------	---	----------------------------	---------------------------------



ELEV 1321	TDZE 1316
-----------	-----------



3500 KUPIW VGSI and descent angles not coincident (VGSI Angle 3.00/ TCH 40).
 *LNAV only, VDP NA when using Springfield-Branson Ntl altimeter setting.



CATEGORY	A	B	C	D
GLS PA DA	NA			
LNAV/VNAV DA	1937-2¼		621 (700-2¼)	
LNAV MDA	1760-1	444 (500-1)	1760-1¼	444 (500-1¼)
CIRCLING	1820-1 499 (500-1)	1860-1 539 (600-1)	1980-1¾ 659 (700-1¾)	1980-2 659 (700-2)

LEBANON, MISSOURI
 REIL Rwy 18 and 36
 MRL Rwy 18-36

37°39'N - 92°39'W

FLOYD W JONES LEBANON (LBO)

RNAV (GPS) RWY 18

NC-3, 03 OCT 2024 to 31 OCT 2024

NC-3, 03 OCT 2024 to 31 OCT 2024