

WAAS CH <b>77815</b> <b>W11A</b>	APP CRS <b>103°</b>	Rwy Idg TDZE Apt Elev	<b>5500</b> <b>107</b> <b>107</b>
--	------------------------	-----------------------------	---

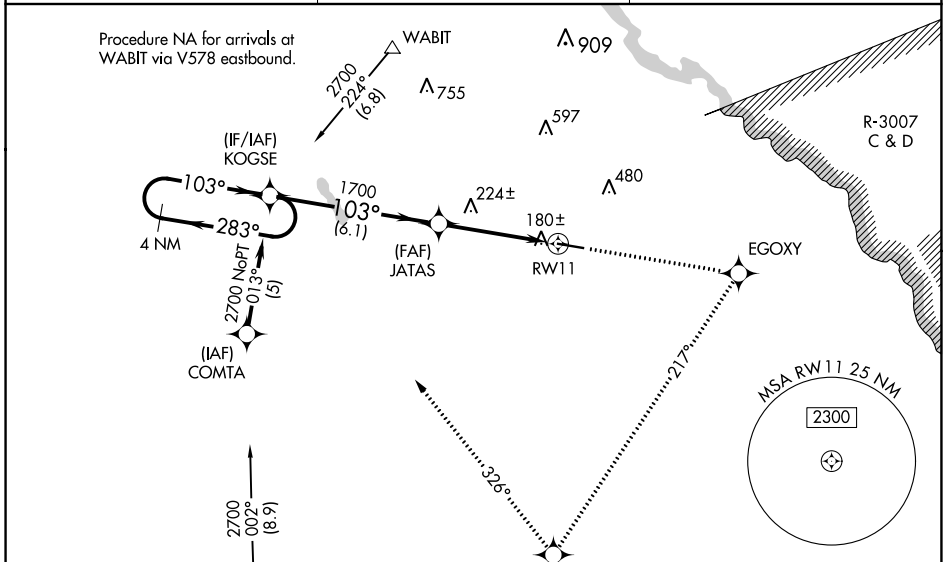
# RNAV (GPS) RWY 11

JESUP-WAYNE COUNTY (JES)

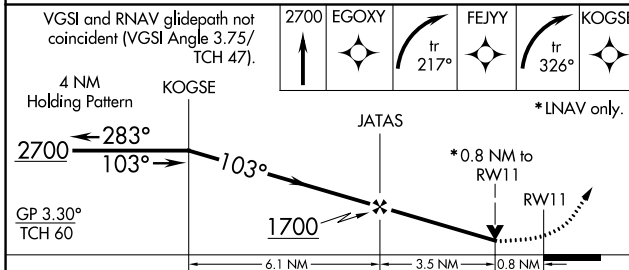
**NA** Baro-VNAV NA when using Savannah/Hilton Head Intl altimeter setting. For uncompensated Baro-VNAV systems, LNAV/VNAV NA below -1 5°C (5°F) or above 54°C (130°F). DME/DME RNP-0.3 NA. Helicopter visibility reduction below 1 statute mile NA. When local altimeter setting not received, use Savannah/Hilton Head Intl altimeter setting: increase LPV DA to 583, LNAV/VNAV DA to 597, and visibility LPV all Cats ½ SM and LNAV/VNAV all Cats ¼ SM; increase all MDAs 140 feet and visibility LNAV Cat C and Circling Cat C ½ SM. VDP NA when using Savannah/Hilton Head Intl altimeter setting.

**MISSED APPROACH:** Climb to 2700 direct EGOXY and right turn via track 217° to FEJYY and right turn via track 326° to KOGSE and hold.

AWOS-3PT <b>118.125</b>	JACKSONVILLE CENTER <b>126.75 277.4</b>	UNICOM <b>122.8 (CTAF)</b>
----------------------------	--	-------------------------------

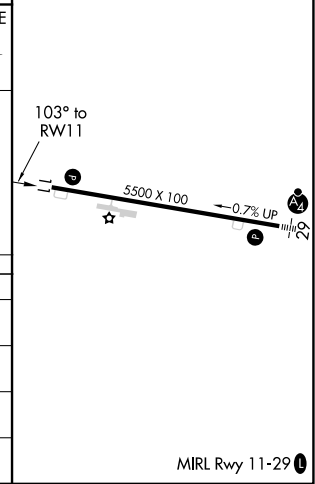


Procedure NA for arrivals at HABLE via V267 southeast bound.



ELEV 107	TDZE 107
----------	----------

CATEGORY	A	B	C	D
LPV DA	462-1	355 (400-1)		NA
LNAV/VNAV DA	476-1¼	369 (400-1¼)		NA
LNAV MDA	480-1	373 (400-1)		NA
CIRCLING	520-1 413 (500-1)	560-1 453 (500-1)	780-2 673 (700-2)	NA



SE-4, 03 OCT 2024 to 31 OCT 2024

SE-4, 03 OCT 2024 to 31 OCT 2024