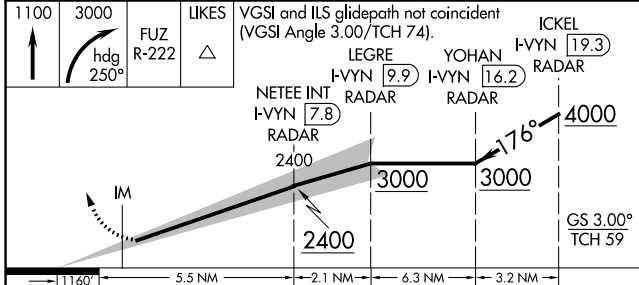
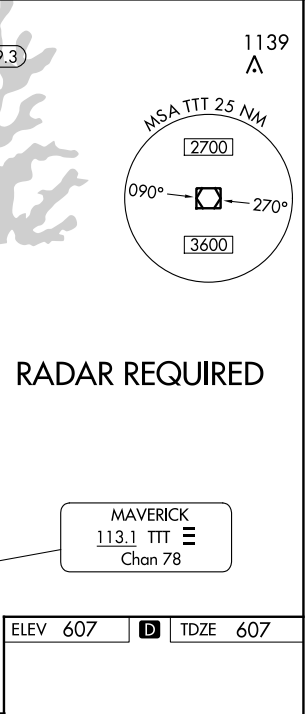
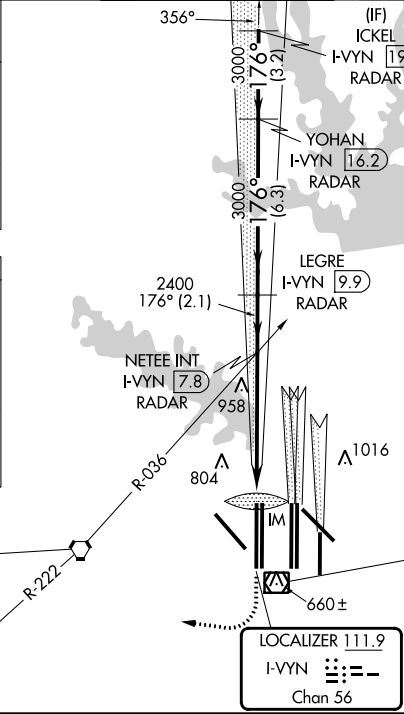
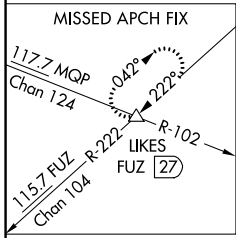
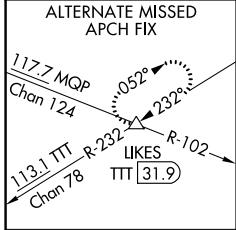


LOC/DME I-VYIN 111.9 Chan 56	APP CRS 176°	Rwy Idg TDZE Apt Elev 13400 607 607
--	------------------------	---

ILS RWY 18R (SA CAT I)

DALLAS-FORT WORTH INTL (DFW)

▽ ▲ DME or RADAR required. Simultaneous approach authorized with Rwy 17 L/C/R. Requires specific OPSPEC, MSPEC, or LOA approval and use of HUD to DH.	Rwy 18R ALS-F2 (A)	MISSED APPROACH: Climb to 1100 then climbing right turn to 3000 on heading 250° and FUZ VORTAC R-222 to LIKES INT/FUZ VORTAC 27 DME and hold.
	D-ATIS ARR 123.775 DEP 135.925	REGIONAL APP CON 118.425
GND CON 121.65 121.8 EAST 121.85 WEST		CLNC DEL 128.25
CPDLC		



1100	3000	LIKES	VGSI and ILS glidepath not coincident (VGSI Angle 3.00/TCH 74).	ICKEL I-VYIN [19.3] RADAR
↑	hdg 250°	FUZ R-222 △	LEGRE I-VYIN [9.9] RADAR	YOHAN I-VYIN [16.2] RADAR
			NETEE INT I-VYIN [7.8] RADAR	

ELEV 607	D	TDZE 607
----------	----------	----------

