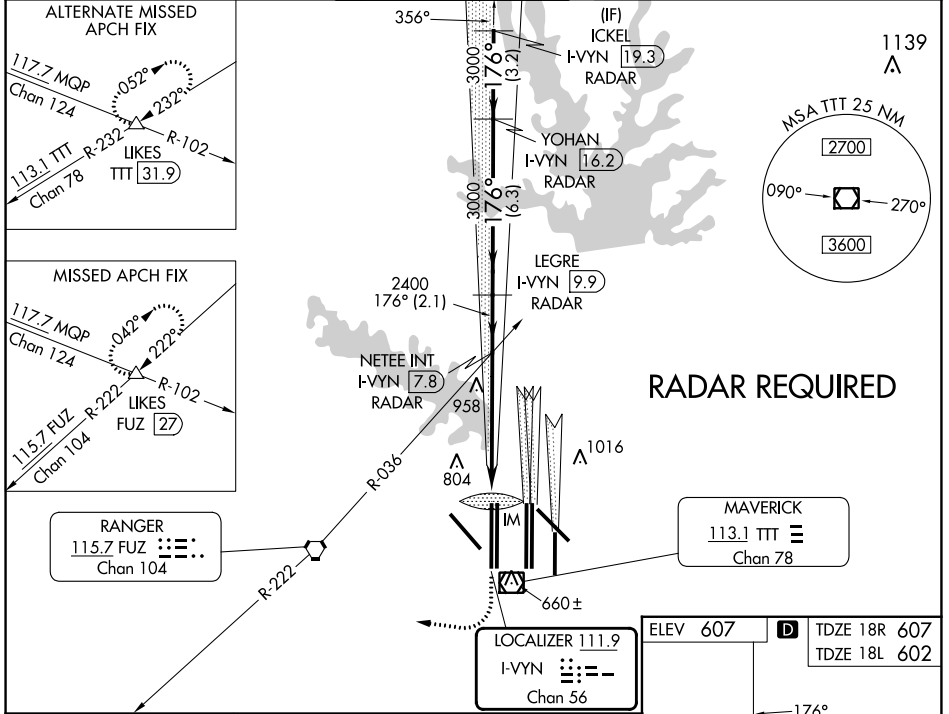


LOC/DME I-VYIN 111.9 Chan 56	APP CRS 176°	Rwy Idg TDZE Apt Elev	18R 13400 607 607	18L 13401 602 607
--	------------------------	-----------------------------	---	---

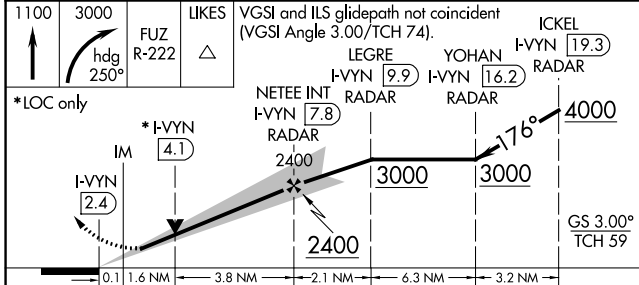
ILS or LOC RWY 18R

DALLAS-FORT WORTH INTL (DFW)

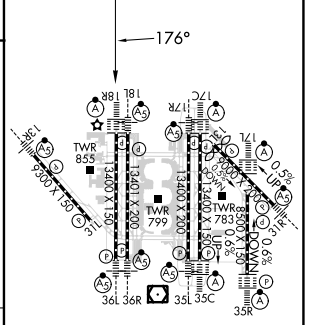
<p>⚠ Inop table does not apply to Sidestep 18L Cats A and B. DME or RADAR required. Simultaneous approach authorized with Rwy 17 L/C/R. For inop ALSF/MALSR, increase S-LOC 18R Cat C/D and Sidestep 18L Cat C visibility to 1¾ mile.</p>		Rwy 18R ALSF-2 	Rwy 18L MALSR 	MISSED APPROACH: Climb to 1100 then climbing right turn to 3000 on heading 250° and FUZ VORTAC R-222 to LIKES INT/FUZ VORTAC 27 DME and hold.	
D-ATIS ARR 123.775 DEP 135.925	REGIONAL APP CON 118.425	DFW TOWER 126.55 127.5 EAST 124.15 134.9 WEST	GND CON 121.65 121.8 EAST 121.85 WEST	CLNC DEL 128.25	CPDLC



RADAR REQUIRED



ELEV 607	D	TDZE 18R 607
		TDZE 18L 602



CATEGORY	A	B	C	D
S-ILS 18R	807/18		200 (200-½)	
S-LOC 18R	1220/24	613 (700-½)	1220-1¾	613 (700-1¾)
SIDESTEP 18L	1220/50	618 (700-1)	1220-1¾	1220-1½
			618 (700-1¾)	618 (700-1½)

HIRL all Rwys					
REIL Rwys 13L and 31L					
TDZ/CL all Rwys except 13L and 31L					
FAF to MAP 5.5 NM					
Knots	60	90	120	150	180
Min:Sec	5:30	3:40	2:45	2:12	1:50

SC-2, 03 OCT 2024 to 31 OCT 2024

SC-2, 03 OCT 2024 to 31 OCT 2024