

LOC/DME I-PKQ 110.3 Chan 40	APP CRS 356°	Rwy 35C Idg 13400 TDZE 563 Apt Elev 607	Rwy 35L Idg 13400 TDZE 564 Apt Elev 607
--	------------------------	--	--

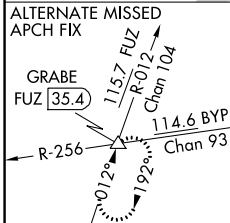
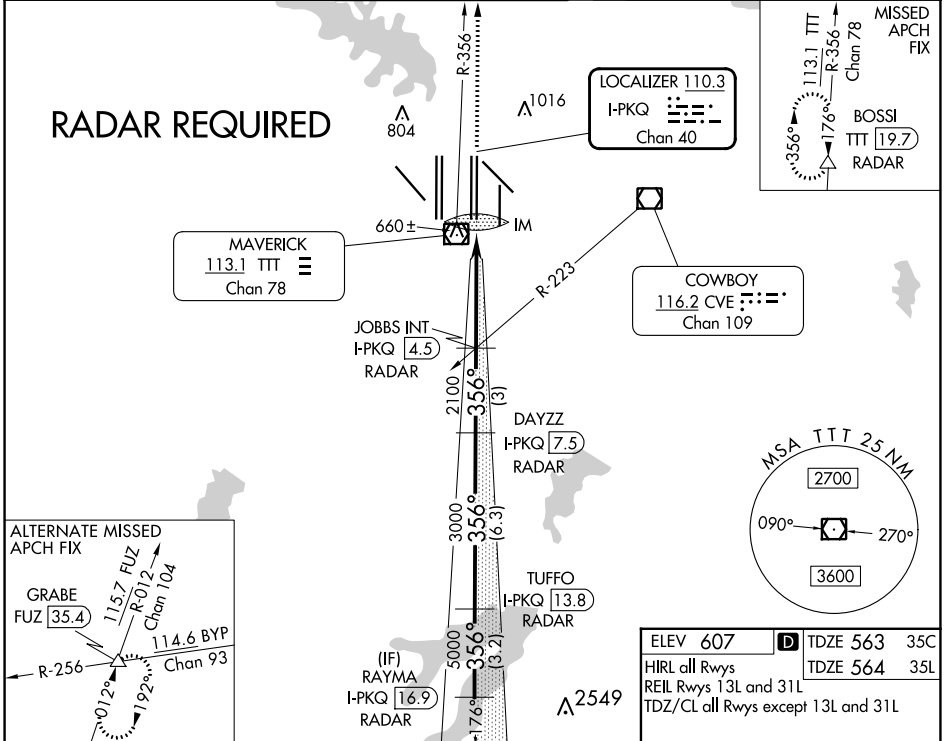
ILS or LOC RWY 35C

DALLAS-FORT WORTH INTL (DFW)

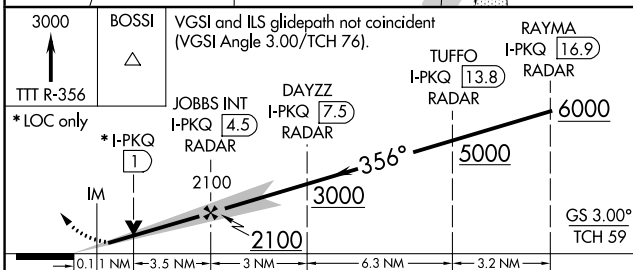
▼ Inoperative table does not apply to Sidestep Rwy 35L Cats A and B. DME or RADAR required. Simultaneous approach authorized with Rwy 35R, Rwy 36L/R.

Rwy 35C ALS-F-2 	Rwy 35L MALSR 	MISSED APPROACH: Climb to 3000 on TTT VOR/DME R-356 to BOSSI/TTT 19.7 DME/RADAR and hold.
------------------------	----------------------	---

D-ATIS ARR 123.775 DEP 135.925	REGIONAL APP CON 127.075	DFW TOWER 126.55 127.5 EAST 124.15 134.9 WEST	GND CON 121.65 121.8 EAST 121.85 WEST	CLNC DEL 128.25	CPDLC
--	------------------------------------	---	---	---------------------------	-------



ELEV 607	TDZE 563 35C
HIRL all Rwys	TDZE 564 35L
REIL Rwys 13L and 31L	
TDZ/CL all Rwys except 13L and 31L	



CATEGORY	A	B	C	D
S-ILS 35C	763/18 200 (200-½)			
S-LOC 35C	1000/24	437 (400-½)	1000/40	437 (400-¾)
SIDESTEP 35L	1000/55 436 (400-1)		1000-1½ 436 (400-1½)	

FAF to MAP 4.6 NM

Knots	60	90	120	150	180
Min:Sec	4:36	3:04	2:18	1:50	1:32

SC-2, 03 OCT 2024 to 31 OCT 2024

SC-2, 03 OCT 2024 to 31 OCT 2024